

UNIVERSITY OF GEORGIA®

PANHELLENICPOINTER

2020







Panhellenic Executive Board

WELCOME TO UGA

Dear Potential New Member:

Welcome to the University of Georgia! As the representatives for more than 5,000 UGA sorority women, we congratulate you on your acceptance and decision to attend UGA. Your years here will include many exciting learning experiences but perhaps none as well-rounded and memorable as being a member of a Greek organization. The Greek community at UGA has enhanced the lives of thousands of students since 1865 and can add many valuable dimensions to your college experience.

Recruitment will allow you the opportunity to meet as many Greek women as possible and learn about each organization, Panhellenic, and the Greek community.

In joining any sorority, you become a part of Panhellenic. By considering Panhellenic as a whole, you can look at all sororities with an open mind. Please do not rule out any sorority before Recruitment starts or before learning firsthand what each sorority has to offer. After all, every

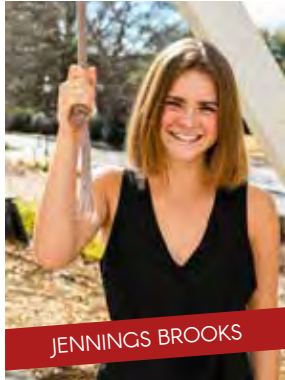
sorority shares common goals of sisterhood, and we are all a part of Panhellenic. Involvement in a sorority can be a positive contribution to your collegiate experience through friendship, leadership, academics, philanthropy, networking opportunities, and personal growth.

No matter which sorority you choose, the Panhellenic friendships you form will be lifelong. Beginning with your first day as a new member, you will be part of a group of women with whom you can share your college experience. A sorority is much more than just a house to live in – it is a group of women drawn together by mutual goals, trust, and respect.

Once again, we are pleased you have chosen to attend UGA. We hope you enjoy Recruitment and decide to become part of our Greek community. We wish you the best in your future at the University of Georgia.

Panhellenic Executive Board

THE PANGELENIC EXECUTIVE BOARD



JENNINGS BROOKS

Panhellenic President



FRANCESCA DELLASALA

Vice President of
Administration



JENNA WILSON

Vice President of
Recruitment



MEREDITH PANNEK

Vice President of
Recruitment Counselors



AVA PARISI

Vice President of Standards



HOLLY CHAFIN

Vice President of
Public Relations



SARAH HOUGHTON

Vice President of Finance
& Correspondence



KARA REX

Assistant Director of
Greek Life and Advisor
to the Panhellenic Council

Thank You!

Panhellenic graciously thanks Talley Davidson for photographing the 2020 Panhellenic Executive Board.

THE PANHELLENIC COUNCIL



THE PANHELLENIC CREED

We, as undergraduate members of women's fraternities, stand for good scholarship, for guarding of good health, for maintenance of fine standards, and for serving, to the best of our ability, our college community. Cooperation for furthering fraternity life, in harmony with its best possibilities, is the ideal that shall guide our fraternity activities.

We, as fraternity women, stand for service through the development of character inspired by the close contact and deep friendship of individual fraternity and Panhellenic life. The opportunity for wide and wise human service, through mutual respect and helpfulness, is the tenet by which we strive to live.

Every woman who joins a sorority becomes a member of Panhellenic. The Panhellenic council is the governing body for all 19 National Panhellenic Conference (NPC) sororities on the University of Georgia campus and unites every sorority woman regardless of individual affiliation. Each sorority has a delegate and an assistant delegate on the council. Together, the council members strive to unite sorority women and strengthen their values through cooperation, common interests and talents brought from each chapter. The council is led by seven executive board members and the advisor who oversee all programs and activities. They work together with the delegates to make the Greek community a positive and active influence on the UGA campus and in the Athens community. The Panhellenic council is responsible for promoting scholarship, philanthropy, personal growth, health, safety, and involvement in sorority life and the Greek community as a whole.

Through committee work, Panhellenic provides activities and honors such as Panhellenic social events, philanthropy projects, and scholarship awards. Panhellenic also sponsors programs in areas such as risk management, personal safety, leadership, and new member education. The council sponsors numerous service projects and contributes financially to campus and community organizations. Finally, the council organizes and oversees Recruitment. Thus, you are able to experience what Panhellenic does firsthand.

Α	Alpha (al-fah)
Β	Beta (bay-tah)
Γ	Gamma (gam-ah)
Δ	Delta (del-tah)
Ε	Epsilon (ep-si-lon)
Ζ	Zeta (zay-tah)
Η	Eta (ay-tah)
Θ	Theta (thay-tah)
Ι	Iota (eye-o-tah)
Κ	Kappa (kap-pah)
Λ	Lambda (lamb-da)
Μ	Mu (mew)
Ν	Nu (new)
Ξ	Xi (zie)
Ο	Omicron (omm-i-cron)
Π	Pi (pie)
Ρ	Rho (roe)
Σ	Sigma (sig-mah)
Τ	Tau (taw)
Υ	Upsilon (oop-si-lon)
Φ	Phi (fie)
Χ	Chi (kie)
Ψ	Psi (sie)
Ω	Omega (o-may-gah)

ΑΒΓΔΕΖΗΘΙΚΑΜΝΞΟΠΡΣΤΥΦΧΨΩ

THE GREEK DICTIONARY

Active: A sorority woman who has been formally initiated by her chapter.

Alumna: An initiated sorority member who is no longer in college but can provide recommendations for her sorority.

Bid: A formal invitation to join a sorority or fraternity issued by the Panhellenic Council or by an individual sorority or fraternity.

Chapter: A local group of a national organization, designated by its own Greek letter name.

Continuous Open Bidding: An opportunity for chapters who are not at total to extend bids to women who did not join a sorority during Formal Recruitment.

Fraternity: The name that applies to all Greek letter organizations and is characterized by a ritual, pin and strong bond of brotherhood/sisterhood.

Gamma Chi: A sorority member who has disaffiliated during Recruitment to assist Potential New Members. Gamma Chis will be wearing blue vests during Recruitment.

Greek: A member of a sorority or fraternity.

House Director/Mother: A woman who lives in the sorority house and cares for all of the women living in the sorority house. She plans meals and manages the house.

Interfraternity Council (IFC): an umbrella organization that presides over 25 men's fraternities, each of which is autonomous as a social, Greek letter society of college men, undergraduate and alumni.

Initiation: The formal ceremony which brings new members into full membership of a sorority or fraternity.

Intentional Single Preference: When a PNM attends more than one Pref Round event but only lists one choice on her Membership Recruitment Acceptance Binding Agreement. This is strongly discouraged as your chances of joining are severely limited.

Lavalier: A necklace with Greek letters attached to it. Sorority members usually receive their sorority's lavalier at the time of joining or after initiation.

Legacy: A PNM whose sister, mother, or grandmother is an alumna or active member of a particular sorority. A sorority is not obligated to pledge its legacies.

Greek Dictionary

Membership Recruitment Acceptance Binding Agreement (MRABA): Also known as a Pref Card, each PNM completes an MRABA after Pref Round to state her membership preferences. The PNM ranks the sororities she visited during preference round and signs it to state she will accept a bid from any sorority she lists. This is a binding agreement.

Multicultural Greek Council (MGC): An umbrella organization for UGA's 12 multicultural Greek-letter organizations, 6 sororities and 6 fraternities.

Mismatch: When a PNM's name fails to match any of her sorority preferences.

New Member: One who has been accepted as a member of a sorority or fraternity. After a period of education about the sorority/fraternity, she/he may be initiated.

New Member Educator: The individual who is the liaison between the new members and the chapter. This individual is responsible for implementing and monitoring the new member program and preparing the new members for initiation.

National Panhellenic Conference (NPC): a conference body, composed of all 26 members of women's fraternities, each of which is autonomous as a social, Greek letter society of college women, undergraduate and alumnae. UGA has 19 of the 26 represented.

National Pan-Hellenic Council (NPHC): a national council body composed of the nine historically, predominantly African American Greek letter organizations at both the college and alumni level. UGA has seven of the nine represented.

Panhellenic Council: The governing body of the 19 NPC member sororities on the UGA campus.

Panhellenic Exec: The seven members of Panhellenic Exec lead the UGA Panhellenic Council. They are sorority members who have disaffiliated during Recruitment to oversee the process. Look for members of Panhellenic Exec in red vests.

Potential New Member (PNM): A woman who is participating in the Recruitment process and wishes to explore the possibilities of sorority membership.

Quota: The number of women that a sorority may pledge during Recruitment.

Recommendation: A letter written by a sorority alumna introducing and recommending a Potential New Member for membership into her sorority. Also called a rec or reference.

Recruitment: A function whereby undergraduates interested in a sorority or fraternity meet with the members, learn more about the organization and join a organization.

Α	Alpha (al-fah)
Β	Beta (bay-tah)
Γ	Gamma (gam-ah)
Δ	Delta (del-tah)
Ε	Epsilon (ep-si-lon)
Ζ	Zeta (zay-tah)
Η	Eta (ay-tah)
Θ	Theta (thay-tah)
Ι	Iota (eye-o-tah)
Κ	Kappa (kap-pah)
Λ	Lambda (lamb-da)
Μ	Mu (mew)
Ν	Nu (new)
Ξ	Xi (zie)
Ο	Omicron (omm-i-cron)
Π	Pi (pie)
Ρ	Rho (roe)
Σ	Sigma (sig-mah)
Τ	Tau (taw)
Υ	Upsilon (oop-si-lon)
Φ	Phi (fie)
Χ	Chi (kie)
Ψ	Psi (sie)
Ω	Omega (o-may-gah)



THE GREEK COMMUNITY

Panhellenic is only a small part of the Greek community at UGA. The Greek community also includes the groups of the Interfraternity Council, National Pan-Hellenic Council and the Multicultural Greek Council. All chapters are advised by the Greek Life Office.

The Interfraternity Council, known as IFC, is the governing body for 25 fraternities on campus. IFC is responsible for creating policies, promoting academic excellence and planning Fraternity Recruitment. The IFC executive board is comprised of members from various fraternities and holds weekly meetings.

The National Pan-Hellenic Council, known as NPHC, is another part of the UGA Greek community. NPHC brings unity among traditionally African-American sororities and fraternities on campus. NPHC is made up of seven groups: four fraternities and three sororities. NPHC sororities do not participate in Formal Recruitment because their national policies do not permit women to join who have not begun classes or established a college grade point average.

The Multicultural Greek Council, known as MGC, our newest and fastest growing council, consists of 12 organizations. MGC serves as an umbrella organization to unify its unique fraternities and sororities. Together they hope to raise awareness of their respective cultures.

The Office of Greek Life provides educational initiatives designed to challenge, support, and recognize individuals and groups associated with Greek organizations through leadership training, academic support, community service and diversified programming. While the Greek Life Office staff provides advisement, support and assistance to our member groups as well as the four governing councils, the groups are recognized as autonomous groups, and the University sets forth the rights of these groups as private, voluntary social organizations. UGA and the Greek Life office are not involved in membership decisions.

As you can see, being a part of a sorority and Panhellenic brings you in contact with a diverse group of people. All four councils are part of Greek Life at UGA, and all Greeks rely on each other for support and assistance.

For more information regarding UGA's Greek community, please contact the Greek Life Office at (706)542-4612. Details regarding all aspects of Greek Life and individual council and chapter information can be found at the Greek Life website: greeklife.uga.edu

MULTICULTURAL GREEK COUNCIL MEMBERS

Sororities:	Fraternities:
Alpha Sigma Rho	Lambda Phi Epsilon
Delta Phi Lambda	Lambda Theta Phi
Delta Phi Omega	Lambda Upsilon Lambda
Lambda Theta Alpha	Delta Epsilon Psi
Sigma Sigma Rho	Sigma Beta Rho
Theta Nu Xi	Xi Kappa

NATIONAL PAN-HELLENIC COUNCIL MEMBERS

Sororities:	Fraternities:
Alpha Kappa Alpha	Alpha Phi Alpha
Delta Sigma Theta	Omega Psi Phi
Sigma Gamma Rho	Phi Beta Sigma
	Kappa Alpha Psi

INTRAFRATERNITY COUNCIL MEMBERS

Alpha Epsilon Pi	Phi Gamma Delta
Alpha Gamma Rho	Phi Kappa Psi
Alpha Tau Omega	Phi Kappa Tau
Beta Theta Pi	Pi Kappa Alpha
Beta Upsilon Chi	Pi Kappa Phi
Chi Phi	Phi Kappa Theta
Chi Psi	Sigma Alpha Epsilon
Delta Sigma Phi	Sigma Chi
Delta Tau Delta	Sigma Nu
Kappa Alpha	Sigma Phi Epsilon
Kappa Sigma	Sigma Pi
Lambda Chi Alpha	Tau Epsilon Phi
Phi Delta Theta	



Academics

Academic achievement is the first and foremost priority of all sororities. Every sorority places a strong emphasis on creating an atmosphere conducive to high academic performance as well as challenging each member to live up to her highest academic potential.

Each sorority implements various programs designed to assist members in their academic pursuits. Programs range from tutoring and study hours in the house to educational programs, awards, and incentives.

Additionally, most organizations provide financial scholarships for members, often supported by their national organizations and local alumnae groups. The Panhellenic Council sponsors programs designed to help chapters focus on methods of scholastic improvement and annually awards several scholarships to recognize academic accomplishments.

Sorority women consistently achieve a higher grade point average than non-Greek undergraduate women. This statistic indicates the positive effect sororities have on women's academic achievement.

Panhellenic Average GPAs

Fall 2019: 3.56

Spring 2019: 3.52

All-Women's Average GPA: 3.49

Leadership K

The UGA Greek community is dedicated to building future leaders by providing a wealth of leadership opportunities. Membership in a Greek organization is one of the most effective ways to discover and refine your leadership potential. Within each chapter, members have the chance to assume many different leadership roles ranging from Recruitment Chair to Treasurer to Social Chair or even President. Within each organization, anywhere from 5 to 25 different leadership positions exist, all requiring different degrees of skill and commitment. Each national organization also sponsors leadership development programs, which may include officer training programs and regional conferences.

Opportunities to learn and practice leadership stretch beyond chapters. The Greek Life Office offers several leadership development programs such as Freshmen Greek Leaders, Sophomore Leaders Circle, Order of Omega, and Junior Panhellenic. The Panhellenic Council also founded the UGA Student Food Pantry in 2011 and is dedicated to managing and providing sorority volunteers to this valuable UGA campus resource which is available to all students.

Beyond the Greek community, sorority women are involved in nearly all student organizations at UGA and can be found in leadership positions in many organizations such as UGA Athletics, the Student Government Association, Arch Society, University Judiciary and Georgia Recruitment Team, just to name a few.



Philanthropy K

Sororities host a variety of fundraisers throughout the year such as meals on the lawn and 5K races. The money raised goes directly to the sorority's philanthropy.

Chapters also donate their time outside of their own philanthropic events. Members participate in a variety of University-wide and community-based organizations such as the Athens Homeless Shelter, Northeast Georgia Food Bank, and the Clarke County Mentor Program. Every year, the Greek community hosts "Trunk or Treat" and an Easter Egg Hunt for the Boys and Girls Club of Athens.

Sorority women actively participate in UGAMiracle events, the official philanthropy of UGA Greek Life. Panhellenic had full sorority participation, and all 19 sororities combined helped raise \$1,144,453.19 for UGA Miracle, which benefits Children's Healthcare of Atlanta.

The Panhellenic Council also sponsors the UGA Student Food Pantry. Sorority members provide staffing and donations that serve students, faculty, and staff in need of food. Greeks feel that it is important to focus on aspects of life that can be improved and serving others is a small way to help.



Activities

All sororities encourage members to be involved in activities outside the sorority. Many Greeks hold leadership positions within these organizations and can be found as Dawg Camp counselors, Orientation Leaders, and volunteering for Relay for Life. In addition to organized intramural sports such as flag football, tennis, and soccer, there are a number of club teams in which women can participate. UGA athletes and band members are also members of sororities along with soccer players, cheerleaders, and runners.

Greek students are involved in the more than 700 student organizations on campus as well as many organizations in the Athens community. They are active in business fraternities, honor societies and advocacy groups.

Greeks are an active force on campus and in the community. A sorority can open many doors to activities you may not otherwise experience and introduce you to people you might not otherwise meet.



Sisterhood

Although each sorority is unique and has its own special characteristics, there is a common thread that unites us all – sisterhood, a special bond experienced among the members of a sorority.

Sisterhood entails a respect for others and under no circumstance will individual chapters, the Panhellenic council, the Greek community or UGA tolerate any sort of hazing activity. Hazing is any intentional, negligent or reckless action, activity or situation, which causes another pain, embarrassment or harassment, regardless of the willingness of the participant.

Sororities at UGA expect their members to strive for academic achievement, demonstrate responsible citizenship, show concern for the rights and needs of others and provide leadership by promoting self-respect.

Hazing has no place in sorority life and is completely contrary to the ideals of a women's fraternal organization. If you have questions or concerns regarding hazing, please contact the Greek Life Office (706) 542-4612 or the Hazing/After-Hours Hotline at (706) 207-0779.

Additionally, the University's Non Discrimination and Anti-Harassment ("NHAD") Policy prohibits any member of the UGA community from engaging in harassment, including sexual misconduct, and discrimination against others within the University community, and includes instructions for making a complaint. The full NDHA policy is available at <http://eoo.uga.edu/policies/non-discrimination-anti-harrassment-policy>

Socials K



In addition to academic and leadership opportunities, sororities also provide social programs and activities for their members. Social activities include formals, themed socials, date nights, Homecoming, and Parents Weekends.

The primary goal of every chapter is to bring together a group of women and enhance their values and traditions while building relationships. Diversified social programs allow students the opportunity to develop meaningful friendships within chapters, the Greek community and the UGA campus as a whole.

At UGA, each chapter maintains a responsible social policy to promote enjoyable social activities in a safe environment. Alcohol is not permitted in any chapter house. The University also has a closed party policy that opposes the misuses of alcohol and maintains that all chapters, individual members and guests must abide by state and local laws and university regulations.

All chapters work to foster a better understanding of social responsibility and alcohol education for their members. Panhellenic is committed to helping its organizations maintain balanced social programs, which contribute to personal development and do not detract from the University's educational mission. The social opportunities are varied and endless. There is always something to do when you are part of Greek Life at UGA.



GAMMA CHIS



Recruitment is exciting and memorable but can also be hectic and emotional. From the start of Recruitment, you will be assigned a Gamma Chi (also known as a Recruitment Counselor) along with 17 to 20 other Potential New Members. Your Gamma Chi is prepared to help you in any way. Although she is a member of a sorority, she has disaffiliated from her personal sorority and is representing the Panhellenic Council during Recruitment Week.

Each Gamma Chi has promised not to reveal her sorority affiliation in order to give unbiased advice. Although it is sometimes tempting to know which sorority your Gamma Chi is a member of, please do not ask her or make extreme efforts to find out. Also, if you know which sorority a Gamma Chi is a member of do not reveal her affiliation. All of the Gamma Chis and Panhellenic Exec will reveal their sorority affiliations on Bid Day.

You will be able to identify Gamma Chis by the blue vests each of them wears during Recruitment. You will have daily meetings with your Gamma Chi to review the day's activities and to receive additional information.

Your Gamma Chi went through an extensive training program to qualify her for this position. Most importantly, she is an impartial listener. She will be your friend who will share in your joys and show concern in your anxieties and is always willing to talk about what you are feeling and experiencing.

Your Gamma Chi can help you make your Recruitment experience even more exciting and enjoyable. Never hesitate to ask her anything. She is a vital link between you and the Greek community, so get to know her!

WHAT *to Expect*

Round One – Water Parties:

During Round One, you will visit all 19 sororities for 20 minutes each over the course of 2 days. These events are intended to introduce you to every chapter before you begin to make any decisions. Each event will begin with the chapter members performing loud, enthusiastic chants and cheers. Don't be intimidated by the noise; the chapter members are simply excited to meet you! After these cheers, you will spend the remainder of the party meeting different sisters and talking to sorority members about yourself. You may get tired of repeating information about yourself, your hometown, your interests, etc., but each house is a new group of women that wants to meet you. Also, don't hesitate to ask the sorority women questions about themselves or the chapter.

In terms of what to wear, casual skirts and dresses are appropriate for Round One. Because Round One occurs over 2 days, feel free to wear the same thing for both days or wear two separate outfits—either option is acceptable. Lightweight materials are a necessity because of the hot weather. You will be walking the majority of the day; therefore, sandals and flats are highly recommended; heels are strongly discouraged. The most important thing is to make sure you feel comfortable and confident.



Round One WHAT *to Wear*





*Round Two
WHAT to Wear*

Round Two – Philanthropy:

Round Two events are focused on each chapter's philanthropy and campus involvement. Events are 25 minutes in length, and if invited, you may attend up to 14 events. At each house, the chapter members will show a video about their philanthropic focus, as each sorority has a specific cause to raise funds and awareness for. This round is a good opportunity to ask sorority women about other activities that the chapter is involved in, such as service projects and campus organizations.

In terms of what to wear, Round Two is often considered slightly dressier than Round One. However, casual skirts and dresses are still appropriate for Round Two. Lightweight materials are a necessity because of the hot weather. Again, you will be walking the majority of the day; therefore, choose sandals and flats over heels.



WHAT *to Expect*

Round Three – House Tours:

Round Three is an exciting day and consists of tours of each sorority's chapter house. Each round is 30 minutes long, and if invited, you may attend up to 8 events. All 19 sororities have beautiful, historic homes and during this round the chapter members will show you bedrooms and other spaces where they spend time with one another. During this round, the sorority women will want to get to know you on a more personal basis. You should begin to recognize the character and spirit of each sorority.

In terms of clothing, Round 3 is certainly more relaxed. All women will wear the same Panhellenic Recruitment t-shirt with a choice of bottoms. You may choose to wear a skirt or shorts, but athletic shorts are discouraged. Lightweight materials are strongly encouraged, as are sandals and flats.



Round Three

WHAT to Wear

WHAT TO PUT IN YOUR PURSE

The days are long and you will be tired, so make sure you aren't putting too much in your purse! Each house will have food and water outside for Potential New Members, so there isn't much need to carry these items. However, you can still stick snacks in your bag if you want. You may want to carry a small umbrella, a hand held fan, breath mints, oil absorbing sheets, lipstick, and deodorant. Your Gamma Chi will explain, but please bring a pen and a pack of notecards, as well.





Preferential Round
WHAT *to Wear*



Preferential Round (Prefs):

The last day of Recruitment is Preferential Round. The events are 50 minutes long and if invited, you may attend up to 2 parties. This round is meant to help you make your final decision. A sorority would not have invited you to Prefs if they did not truly enjoy your company. At each event, think carefully about how you feel at each house and take time to look around, as the women at these events could become your sisters.

Each sorority will present a ceremony, which usually consisting of various speeches and songs. The members will give accounts about what it means to be a sister and reflect on what their sorority has to offer. When making your final decision, think back to the previous rounds of Recruitment and recall what you liked about each chapter. It can sometimes be challenging to choose between two sororities, but remember that there is not necessarily one “right” choice, and a chapter that you may not have strongly considered earlier in the week may be the perfect place for you.

In terms of what to wear, Preferential Round is dressier than previous rounds. Nice dresses or skirts that you wear to a wedding, church or other special event are appropriate. Since you may only attend up to 2 events, heels or wedges are more appropriate, but not required. Because Pref Round events are the most formal, many women choose to wear black dresses; however, this is not a requirement. If you do choose to wear a black dress, it does not have to be solely black. The most important thing is that you feel comfortable and are accurately expressing your true self!

WHAT *to Expect*

Bid Day:

The conclusion of Recruitment is Bid Day. You may receive an invitation to join or you may be notified by Panhellenic that your bid has not been matched. If your bid has not been matched, you will be eligible for continuous open bidding. If you receive an invitation to join, your bid card will list the sorority that has selected you. You will meet with your new member class at Tate Grand Hall and be shuttled by University buses to your Bid Day celebration.

At your sorority house, you will be met by your new sisters. Bid Day is a time for fun, entertainment, and new friends. Enjoy it!

In terms of what to wear, Bid Day is the only day that there is a required dress code. Every New Member is required to wear a white dress on Bid Day. However, feel free to accessorize how you want with jewelry and shoes. Most New Members tend to wear sandals or wedges on Bid Day. Many sororities invite their New Members to spend the night at their sorority house after Bid Day. Many New Members pack their backpacks as an overnight bag to spend the night with their new sisters in their new house.



Bid Day WHAT *to Wear*



Continuous Open Bidding

What to expect during COB:

The purpose of Continuous Open Bidding (COB) is to enable the chapters that did not fill quota, or filled quota but did not reach chapter total, to invite additional new members to join immediately following Formal Recruitment. It is also an opportunity for those women who have mismatched, been released from Recruitment or withdrawn from Recruitment to join a sorority.

The intent of COB is to provide maximum opportunities for membership to the greatest number of women who did not join during the Formal Recruitment period.

Continuous Open Bidding begins after Bid Day and will also continue throughout the year when sororities have spaces available, so you could be contacted about COB opportunities several months after Recruitment has ended. Your Gamma Chi will explain COB in more detail during Recruitment.

Signing the Membership Recruitment Acceptance Binding Agreement:

The preferential bidding system is a method in which Potential New Members' preferences are matched to sororities' preference lists. Following your last Preferential Round event, you will meet your Gamma Chi to sign a Membership Recruitment Acceptance Binding Agreement (MRABA). On your MRABA you will be asked to list, in order of preference, the sorority(ies) you wish to join, and you will sign your MRABA with the understanding that you are willing to accept a bid from the group(s) listed. If a bid is extended to you from one of your choices and you decided not to accept it, you will not be eligible to participate in Continuous Open Bidding and or Recruitment for one year.

Remember that the decision you indicate on your MRABA is binding for one year. If you attend more than one Preferential Round event, your Gamma Chi will encourage you to list more than one sorority on your MRABA because you maximize your opportunity to receive a bid if you list more than one option. Once you have signed and turned in your MRABA, it cannot be changed under any circumstances. You should also not reveal to anyone what choices you made because there is no guarantee to which group you will match. If there is ever any problem with your MRABA, a Panhellenic Executive Officer or your Gamma Chi will contact you about it.



PNM Code of Ethics

Being a part of the University of Georgia's sorority recruitment is not only a great opportunity but a great privilege. Each of the sororities on campus has worked hard for the past year in preparation for your visit to their home. As a guest, you are expected to act in accordance to the following rules, which apply to both the active sorority members as well as recruitment counselors. Failure to do so may result in your removal from the recruitment process.

Potential New Members

CODE of ETHICS



I will attend all events to which I receive an invitation.

I will behave respectfully towards myself, other potential new members, chapter members, recruitment counselors, and university staff at all times.

I will act respectfully and politely when attending all events.

I will not discuss my opinion of any sorority participating in recruitment with other potential new members.

I will not discuss or reveal a known affiliation of any recruitment counselor or Panhellenic Exec member with other potential new members.

I understand that if I am matched with a sorority and receive a bid, I am bound to that group and am therefore considered ineligible for an invitation for membership from any other sorority until the next formal recruitment.

Upper Classmen Quota

What is an upperclassmen quota?

An upperclassmen quota is a separate quota that is used to specifically place upperclassmen Potential New Members. It makes the recruitment process more friendly!

Why are we using an upperclassmen quota for Fall Recruitment?

It gives upperclassmen and transfer students a greater opportunity to pledge during the Formal Recruitment process.

How will you determine if I am an upperclassmen?

We will determine if you are an upperclassmen based on your high school graduation date. If you graduated in Spring 2020 then you will be considered a freshman, and if you graduated any time before that you will be considered an upperclassmen. If you feel that you have special circumstances, please contact the Panhellenic Council.

If I am an upperclassmen will the process be different?

No, the process will be no different for you!



X NEW MEMBER OBLIGATIONS K

Once you make the decision to join a sorority, you will begin one of the most exciting times of your college career. You will enter a new circle of friends and expect to be treated with respect. Sororities at UGA do not condone or participate in any activities which can be classified as hazing.

Each sorority has an organized program designed for its new members. Once a week you will attend a meeting with the new member educator, who is a sister that has been elected to direct the new member program. At these meetings you will study the history, structure and standards of your sorority. This education period will give you an understanding of what awaits you as an initiated member.

Every sorority stresses academics and will have programs set up to assist you. Some sororities may require you to attend a study hall at the house. Activities are also held to build relations between the new members

and the sisters. Each new member has a big sister who is there to offer the benefit of her experience. Additionally, sisterhood events such as movie nights are planned to bring the new members and sisters closer together.

It is important to not only be involved in the sorority but in other activities. Greeks have a reputation for being active in and holding leadership positions in many organizations.

Because they realize the benefits of campus involvement, sororities may require members to be involved in one or more activities outside of the sorority.

The value of your experience will depend largely upon what you make of it. Remember that the sorority chose you not only on the basis of your past achievements, but for the contributions you will make in the future. You will be expected to attend

sorority functions and contribute your time. You will be expected to maintain the high standards your sorority has established. Sorority membership can be one of the most rewarding experiences of your college career. Make the most of it!



X FINANCIAL REQUIREMENTS K

An important consideration in deciding to join a sorority should be if you are able to meet the financial requirements of membership. Membership is most expensive the first semester you join due to many one-time fees. However, all sororities are willing to work with each member individually through payment plans to meet the financial obligations of membership.

Sororities often require members to live in the sorority house for at least one year, usually during the second year of membership. Living in the sorority house is an exceptional value, as the average cost of living in the house (including room/board, dues, & meals) can be less than living in UGA residence halls!

There are also many "extras" such as t-shirts from events, which are in no way mandatory. T-shirts cost usually from \$12 to \$20. If you have questions regarding the cost of belonging to a sorority, please ask your Gamma Chi or sorority members about their costs.



AVERAGE EXPENSES (PER SEMESTER)

Average New Member Dues (first semester membership only):	\$1,700
Average In-House Dues:	\$3,800
Average Out-of-House Dues:	\$1,500



HELPFUL HINTS

IF I PARTICIPATE IN RECRUITMENT, AM I OBLIGATED TO JOIN A SORORITY?

No, many women choose to go through Recruitment to meet people and make new friends. Recruitment is an opportunity for you to visit the sororities, get a glimpse of Greek life, and assess whether or not you would like to be a part of the Greek community.

WHAT DO SORORITIES LOOK FOR IN NEW MEMBERS?

It is difficult to pinpoint exactly what sorority women are looking for. There are as many answers to that question as there are sorority women. A strong academic background is very important to every sorority. Each sorority has a minimum grade requirement and no matter how wonderful the Potential New Member may be, the sorority might release her if she cannot meet the grade requirement.

Often, women have friends currently in sororities or are legacies to certain sororities. Some women feel that these Potential New Members have an advantage in that sorority. However, just as you are not obligated to join that sorority, that sorority is not obligated to extend you an invitation for membership. Furthermore, you should not worry if you are not a legacy or do not know anyone in a sorority. The entire point of going through Recruitment is to meet new people, and every sorority wants to give all Potential New Members an equal chance. Every sorority is looking for a variety of members.

Remember that membership selection is not an easy task, and it varies from sorority to sorority. These differences are based on national policies and chapter bylaws. Therefore, Panhellenic has no input in the membership selection process or the qualifications each sorority considers for members. Sororities strive to put together a well-rounded and balanced group of new members. There is no mold or “perfect” member. Every house wants to add diversity with each group of new members. It is important to be yourself and let your personality shine.



WHAT IF I HAVE A HARD TIME MAKING DECISIONS ABOUT SORORITIES?

Difficult decisions are a very common dilemma. Potential New Members, however, should not look at this as a problem. Most women can be happy in any of the sororities on campus. Think carefully and look objectively at what each sorority has to offer you. A sorority should be a home away from home, a place where you feel totally comfortable and welcome. Your experience at each Recruitment event and personal goals and desires should guide your decision making.

WHAT ARE RECOMMENDATIONS AND DO I NEED THEM?



Recommendations (recs) are letters or statements from a sorority alumna recommending a Potential New Member for membership. At UGA, some sororities require a recommendation from an alumna member of that sorority before the sorority may extend a bid to that woman. A recommendation simply introduces a woman to the sorority so that the sorority members may become better acquainted with her before recruitment begins. Sororities appreciate and use the information obtained through recommendations. However, it is important that you understand that if a sorority requires a potential new member to have a recommendation, it is the responsibility of the individual sorority to obtain a rec, not the responsibility of the PNM. So don't worry if you can't find a letter for a sorority. Securing your own recommendation does not ensure that a sorority will offer you an invitation or a bid. Conversely, not securing your own recommendation does not mean that you will not be offered an invitation or a bid from a particular sorority. There is no advantage to having more than one rec for a chapter. If you wish to secure recs, the letters must come from sorority alumnae. You should not contact sororities about recs – it is only appropriate for an alumna to contact her sorority. For your convenience, addresses to send recs to each chapter are listed in the Pointer and online. Sororities will accept recs until the last day of recruitment. If you are having difficulty securing recs, a list of alumnae of Panhellenic associations can be found at npcwomen.org.



ABIDING BY THE SPIRIT OF RECRUITMENT

Recruitment is intended to give each PNM an equal opportunity to become familiar with every sorority. To keep the process fair, guidelines have been established with the expectation they will be followed. However, violations may occur, sometimes involving PNMs unwittingly. If a sorority offers you presents, invites you to Recruitment events during the summer or implies that you will receive a bid, that sorority is illegally recruiting you. This is unfair to you because this special attention may lead you to believe you may have a better chance of becoming a member of that chapter. However, Recruitment holds no guarantees for anyone. Sororities should be confident that they can attract members when playing by the rules. If you are aware that a sorority is illegally recruiting you, it is your duty to report this violation. Please contact Panhellenic with any questions (706.542.4612)

IMPORTANT REMINDERS

HOUSING

All women participating in Recruitment who are scheduled to live in University Housing this Fall may move into their assigned rooms beginning Saturday, August 15th. Upon your arrival to campus, report to your assigned residence hall. It is extremely important that you check into your room and move in your belongings as soon as you arrive on campus.

OFF-CAMPUS RESIDENCES

Participants who will be living off-campus this fall must move into those residences for Recruitment as no special housing is provided. You must also provide your own transportation each morning to the Tate Center.

RECRUITMENT CHECK-IN AND ORIENTATION

Recruitment check-in will take place on Saturday, August 15th in the Tate Student Center Reception Hall and in residence halls from 9am to 5pm. All participants are required to check in. Do not check in for Recruitment until you have moved into your residence hall.

Recruitment Orientation will also take place on August 15th in Tate Grand Hall at 3pm for parents and at 6pm for participants. Participants will meet their recruitment counselor and receive pertinent information at that time.

MEALS

Six breakfasts and three lunches are provided during Recruitment. For meals on your own, remember to bring extra money. The UGA Meal plan will be open at limited locations the first day of recruitment.

TRANSPORTATION

UGA buses are chartered during Recruitment to transport you to and from events. Potential New Members are required to ride the bus to events. Buses will load at the Tate Student Center one hour before events begin each morning and will be available between events if houses are not within walking distance of each other. Buses will also take you back to the Tate Center after your last event.

ATHLETES, BAND, AUXILIARY MEMBERS and LATE ORIENTATION

During Recruitment, scheduling conflicts may occur for you. Panhellenic makes every effort to accommodate your schedule and will get you to as many events as possible. Sororities will be made aware that you are missing events due to scheduling conflicts and not skipping them. Try not to worry - we will work with you individually to help you get the most out of your Recruitment experience!

WHAT TO BRING

- 1 pack of 3 x 5 index cards*
- A white dress**
- Umbrella
- Comfortable shoes
- Band-aids
- Safety pins

* Index cards are filled out and left at each house for attendance purposes.
You will need approximately 50 index cards

** Panhellenic Sororities require new members to wear a white dress on Bid Day

Don't forget to bring all of your belongings as there is no break between Recruitment and the first day of UGA classes!

FORMAL RECRUITMENT RULES

- A woman must be enrolled at the University of Georgia as a student to participate in Recruitment and belong to a sorority.
- Potential New Members and sorority women are not permitted to discuss or mention any other sorority or fraternity in a negative or degrading manner at any time. Sororities are not to mention or make inference to other sororities and/or fraternities in songs, skits, slide shows or other types of entertainment.
- Sorority women and Potential New Members may not arrange or go on dates or double dates together from the disaffiliation date of July 28 until the conclusion of Formal Recruitment.
- Potential New Members may not contact, in any manner, a sorority member from the disaffiliation date of July 28 until bids are extended. Contact includes visiting, phoning, sending letters, notes, flowers, balloons, etc. Contact the Panhellenic Executive Board with extenuating circumstances.
- Any Greek woman, including members and alumnae, may not contact or visit a Potential New Member in her place of residence during the Formal Recruitment program. This includes residence halls, apartments or any other type of lodging.
- Greek women may not tell Potential New Members to which sorority Gamma Chis and Panhellenic Executive Officers belong.
- Potential New Members may not tell other people to which sorority Gamma Chis and Panhellenic Executive Officers belong.
- Gamma Chis will be stationed at all the chapter houses during events for the Potential New Members if they need assistance.
- Potential New Members must attend all first round events. For subsequent rounds, Potential New Members must accept invitations to the maximum number of events they can. A Potential New Member not attending an event she accepted an invitation for may be dismissed from the Recruitment program.
- Sorority women, alumnae or anyone acting as a representative of a sorority should not tell a Potential New Member or imply that she has a bid, ask her to join or imply an invitation from a group at any time. Any type of statement, written or oral, that would lead a Potential New Member to believe that she was automatically assured a bid or invitation from a sorority is prohibited. Sorority women are not permitted to say anything regarding a Potential New Member's return to their house at any time during the Recruitment process. A bid, written or oral, is defined as a sorority member saying that she or her particular chapter is interested in pledging a particular woman. A bid also infers or implies future connections with the sorority including future meetings during Formal Recruitment. Conversation during the Preferential Round should not in any way indicate that a Potential New Member will be a part of that particular group, will be guaranteed a place or will be returning for Bid Day.
- No Potential New Member shall be asked to state intent or give a promise to any sorority woman, alumna or anyone acting as a representative of a sorority. No Potential New Member should likewise tell her intent or give a promise.
- Potential New Members must attend all meetings with their Gamma Chis. Failure to do so will result in dismissal from the Recruitment program.
- A Potential New Member must consult with her Gamma Chi before withdrawing from the Recruitment program. In the event the Potential New Member feels she must withdraw, she must complete an official withdrawal form with her Gamma Chi.
- Any Potential New Member signing a Membership Recruitment Acceptance Binding Agreement and receiving a bid at the end of Formal Recruitment is bound by the agreement for one calendar year if she is at the same university or college.
- Potential New Members found in violation of any of the Recruitment Rules will be subject to dismissal from the Recruitment program.

K

All Recruitment Rules have been established to help sorority women and Potential New Members uphold the Recruitment system. The Formal Recruitment period has a twofold purpose: to give the Potential New Member every opportunity to become acquainted with as many sororities as possible so that she may make a wise, unbiased decision concerning membership and to ensure that sororities have equal opportunities in recruiting and membership selection under the Panhellenic System.

All sorority members and Potential New Members will be expected to conform to the highest standards of conduct. Mentioning subjects such as sorority reputations, stereotypes or generalizations, Potential New Member reputations or promising bids for membership violates the spirit of the Panhellenic System. Formal Recruitment begins August 16th, 2020 and ends at the conclusion of Bid Day on August 24th, 2020.



POTENTIAL NEW MEMBERS

Bill of Rights

- The right to be treated as an individual.
- The right to be fully informed about the Recruitment process.
- The right to ask questions and receive true and objective answers from Gamma Chis and sorority members.
- The right to be treated with respect.
- The right to be treated as a capable and mature person and not be patronized.
- The right to ask how and why and receive straight answers.
- The right to have and express opinions to Gamma Chis.
- The right to have inviolable confidentiality when sharing information with Gamma Chis.
- The right to make informed choices without undue pressure from others.
- The right to be fully informed about the binding agreements implicit in MRABA signing.
- The right to make one's own choice and decision and accept full responsibility for the results of that decision.
- The right to have a positive, safe and enriching Recruitment and membership experience.



We look forward to seeing you in August!



INDEX

Alpha Chi Omega	28	Delta Zeta	46
Alpha Delta Pi.....	30	Gamma Phi Beta	48
Alpha Gamma Delta	32	Kappa Alpha Theta	50
Alpha Omicron Pi	34	Kappa Delta	52
Alpha Phi	36	Kappa Kappa Gamma	54
Chi Omega	38	Phi Mu	56
Delta Delta Delta	40	Pi Beta Phi	58
Delta Gamma	42	Sigma Delta Tau	60
Delta Phi Epsilon.....	44	Sigma Kappa.....	62
		Zeta Tau Alpha	64



AXΩ

Alpha Chi Omega

Nickname:

Alpha Chi, A Chi O

Founded:

DePauw University, October 15, 1885

Chapter Name:

Beta Sigma

Symbol:

Greek Lyre

Flower:

Red Carnation

Colors:

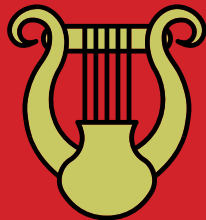
Scarlet and Olive Green

Mascot:

Butterfly

Philanthropy

Alpha Chi Omega Foundation for
Domestic Violence Awareness



Alpha Chi Omega was founded on October 15, 1885, at DePauw University in Greencastle, Indiana. At a time when women were just beginning to occupy seats in college classrooms, seven female students were encouraged by the dean of DePauw's School of Music, to form a women's society within the school. Inspired, our Founders formed the sixth women's fraternity in the country—the first to be in a music school. Sure they would be the last, the founders chose Alpha and Omega—the first and last letters of the Greek alphabet—to form their name, with “Kai” (meaning “and”) in the middle, later changed to the Greek letter Chi. With over 193 chapters nationwide, and growing, our sisterhood is represented on major college campuses across the country.

Alpha Chi Omega at the University of Georgia is a sisterhood founded on the basis of love, loyalty, and friendship. Beta Sigma Chapter was founded in January of 1938 at UGA. We pride ourselves in setting standards on our campus by adhering to our five organizational principles of academic interest, character, financial responsibility, leadership ability, and personal development. Alpha Chi Omega takes great pride in being a sisterhood full of well-rounded, diverse, and talented women who help make our organization unique and authentic, which is why our tagline is “Real. Strong. Women.” Our sisters are individuals who have an undeniable passion for philanthropy, a notable presence on campus through leadership in various organizations, and continually uphold high academic standards.

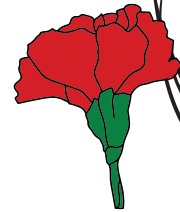
Our Alpha Chi Omega chapter is full of beautiful, talented women who represent us so well in almost every organization on campus. We have AXΩ's on the Executive Boards for UGA Relay for Life, UGA Miracle, UGA HEROS, Student Alumni Association, Camp Kesem, and more! From Orientation Leaders to Resident Assistants to Homecoming Queens, we are proud of the influence our sisters have at UGA. Not only are our sisters involved on campus, but they are also involved with our bi-annual philanthropy events Barefoot On The Lawn and Filmanthropy, all raising money for Alpha Chi Omega's national philanthropy AXΩ's Foundation for Domestic Violence Awareness. We are extremely proud of all of our sisters and their commitment to involvement and giving back to the Athens community.

The sisters of Alpha Chi Omega are excited to meet you and can't wait to share more about why we love our sisterhood during recruitment!





**“Sweet Alpha Chi,
good times never
seemed so good!”**



“Alpha Chi is a place of friendships, passions, pursuits, and involvement. As we break ground on our new home, I can’t help but think about how AXO has been the breaking ground for so many opportunities. It has brought forth friendships rooted in sincerity and love, encouragement in times of drought, support in seasons of insecurity, laughter and lightheartedness, kindness and grace. AXO is composed of women diverse in their interests and passions but who hold tight to authenticity and empowerment. Alpha Chi is more than a name and organization on campus; It is the radiance, vibrancy, and life of the women who call it home.”

—Audra Dekle



Send letters of Recommendation using the online submission form: alphachiuga.org/recruitment
For more information, contact: ugaaxo.recs@gmail.com



ΑΔΠ
Alpha Delta Pi

Nickname:

ADPi

Founded:

Wesleyan College,
May 15, 1851

Chapter Name:

Beta Nu

Symbol:

Diamond

Flower:

Woodland Violet

Colors:

Azure Blue and White

Mascot:

Lion

Philanthropy:

Ronald McDonald House Charities



The founding date of 1851 gives Alpha Delta Pi the distinction of being the first sorority. The ADPi founders chose “we live for each other” as their open motto, and their avowed purpose was that of bettering themselves morally, mentally, and socially. The Beta Nu chapter at the University of Georgia was founded in 1933. Alpha Delta Pi’s national tradition of excellence gives its sisterhood a sense of strength and unity.

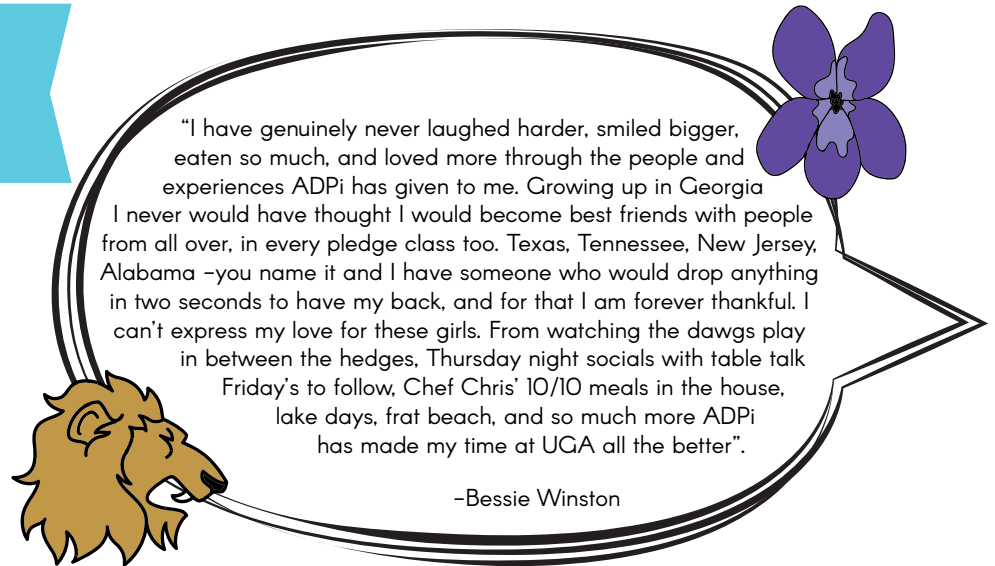
Members of Alpha Delta Pi enjoy working actively with their national philanthropy, The Ronald McDonald House. Their annual philanthropy events such as the “Teeter Totter” meal on the lawn, and the “Diamond Cup Intramural Soccer Tournament” between other sororities and fraternities, are just some of the main ways in which they raise funds for children all throughout the United States and Canada. Since Alpha Delta Pi’s national support for the Ronald McDonald House began, sorority members across the country have raised \$100,000 annually for this philanthropy.

Members of ADPi are very active off and on UGA’s campus. While maintaining a high chapter grade point average, they are also involved in Relay for life, UGA Miracle, UGA HEROs, Hoop Girls, Diamond Darlings, Order of Omega, Young Life, Arch Society, and mentoring and student tutoring programs. Alpha Delta Pi welcomes you to the University of Georgia. We look forward to meeting you and Go Dawgs!





“Boom Boom I wanna go
ADPi, don’t you?”



“I have genuinely never laughed harder, smiled bigger, eaten so much, and loved more through the people and experiences ADPi has given to me. Growing up in Georgia I never would have thought I would become best friends with people from all over, in every pledge class too. Texas, Tennessee, New Jersey, Alabama –you name it and I have someone who would drop anything in two seconds to have my back, and for that I am forever thankful. I can’t express my love for these girls. From watching the dawgs play in between the hedges, Thursday night socials with table talk Friday’s to follow, Chef Chris’ 10/10 meals in the house, lake days, frat beach, and so much more ADPi has made my time at UGA all the better”.

–Bessie Winston



Send Letters of Recommendation to: betanurecs@gmail.com

Address: Alpha Delta Pi / Attn: Ally Dressler | 150 S Milledge Avenue | Athens, GA 30605



ΑΓΔ
Alpha Gamma Delta

Nickname:

Alpha Gam

Founded:

Syracuse University,
May 30, 1904

Chapter Name:

Gamma Alpha

Symbol:

14 Pearls

Flower:

Red and Buff Roses

Colors:

Red, Buff, and Green

Mascot:

Squirrel

Philanthropy:

Alpha Gamma Delta Foundation



With the motto, "Loving Leading Lasting," the ladies of the Gamma Alpha chapter of Alpha Gamma Delta continuously strive to cultivate sisterhood through service, scholarship, and involvement. At the international level, Alpha Gam's philanthropy is the Alpha Gamma Delta Foundation, which fights food insecurity.

Alpha Gam hosts two philanthropy events each year to benefit the Alpha Gamma Delta Foundation. "Mr. Milledge" in the fall and "Alpha Gam Jam" in the spring. Mr. Milledge is a fraternity pageant that features fraternity members on campus, who compete in categories such as best pickup line, game day outfit, and talent. Alpha Gam Jam, which is co-hosted with a fraternity, includes bbq on the Alpha Gam lawn with performances from local music artists.

Alpha Gams are leaders at UGA who have a heart for service and a passion for community involvement. With leaders who are active in the Arch Society, Student Government Association, University Judiciary, and Club Sports, Alpha Gam prides itself in being one of the most involved sororities on campus. This past year we had an Alpha Gam win Homecoming Queen and another Alpha Gam be selected as an Orientation Leader! Members of Alpha Gam may also be found serving in leadership roles in UGA Miracle, Special Olympics, UGA HEROs, Dawg Camp, and countless other organizations. With a commitment to upholding high academic standards, many Alpha Gams are also part of the UGA Honors Program and have been recognized in honor societies such as Order of Omega.

Ladies from all over the country have found their home in the Gamma Alpha chapter of Alpha Gamma Delta. From Los Angeles to Atlanta, girls have come to 530 S. Milledge Avenue to share four of the most wonderful years of their lives. Alpha Gamma Delta welcomes you to the University of Georgia and wishes you the best of luck during recruitment! GO DAWGS!

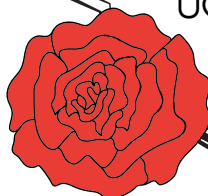




“Since I joined I can’t get enough, Alpha Gamma Delta is the life I love.”



“I am forever thankful for what Alpha Gam has given me. I constantly feel supported and loved for being my authentic self. From studying until 4 AM to going on spontaneous weekend trips, my sisters are always by my side as my family at UGA. Alpha Gam has given me a home 700 miles away from home. Alpha Gam, I love you!”
-Morgan Balice



Send letters of recommendation to: ugaalphagam@gmail.com

Address: Alpha Gamma Delta / Attn: Jules Mallette | 530 S Milledge Ave | Athens, GA 30605



ΑΟΠ
Alpha Omicron Pi

Nickname:

AOPI

Founded:

Barnard College of Columbia University,
January 2, 1897

Chapter Name:

Lambda Sigma

Symbol:

Ruby

Flower:

Jacquemint Rose

Colors:

Cardinal and White

Mascot:

Panda Bear

Philanthropy:

American Juvenile Arthritis Organization



Founded in New York by four accomplished women, Alpha Omicron Pi has expanded to 109 chapters across the country. Chartered in 1935, the Lambda Sigma chapter stands to uphold the high standards of academic excellence, leadership, involvement and genuine friendship. AOII takes great pride in academics and consistently holds one of the highest grade point averages among all of the sororities! Members participate in the UGA honors program, Order of Omega, Foundation Fellows, and has ambassadors in many of the colleges here at the university.

Leadership is also a high priority to members of AOII. AOII is represented on the executive boards of UGA Miracle, HEROS, Relay for Life, and CURE UGA. Members are active in the Arch Society, Tate Society, Wesley Leadership, CRU, and Young Life.

Perhaps most characteristic of the chapter is its deep involvement in campus organizations. AOII is represented in the Red and Black Newspaper, Dawg Camp, the Georgia Recruitment Team, Student Government Association, and the Visitors Center. Members have active roles in UGA Athletics on the Track Team, the Cheerleading team, the Dance Dawgs, the Georgettes, and the Club Lacrosse team. Over the past few years, AOII members have been honored as Orientation Leaders to assist the incoming freshman in their transition to college. An AOII was voted UGA's Homecoming Queen in 2006, 2008, 2011, and 2014. In 2011, an AOII served as SGA's President.

With a passion for our national philanthropy, the Juvenile Arthritis Foundation, the Chapter puts on an annual 5K "Run for the Roses." As a top sorority in community service, members love taking time to get involved in the community volunteering for Athens Regional Hospital, Mercy Health Center, the Boys and Girls Club, Habitat for Humanity, as well as mentoring and coaching at local schools.

A visible characteristic of this group of women is their sincere ability to remain honest and true to themselves. Girls with a diversity of interests and backgrounds come from hometowns all over the country to share a wonderful four years together at UGA. We warmly welcome you to the University of Georgia and hope you enjoy Recruitment! GO DAWGS!





**“It’s my life,
oh so right,
AOII’s the life!”**



“I chose AOII because AOII was a place that is no short of extraordinary. The moment I stepped into the house, I felt an overwhelming amount of acceptance, support, and intentionality. I felt at home, and it felt real. I wholeheartedly believe that this is the place where I see the most love among so many different kinds of people. The girls here are inclusive, confident, passionate, and some of my biggest cheerleaders and lifelong friends. I’ve been so lucky to make the greatest memories, have a never-ending amount of laughs, and I have no doubt formed a home in this place– a place I never want to leave. I truly never knew I needed friends like the ones I’ve found in AOII, and now I can’t imagine life without them. Part of who I am today can be attributed to AOII and the girls within it for pushing me to be the best version of myself, and for shaping me into who I am today. Go AOII!”

– Megan Leith



Send letters of recommendation to: aouiugarecs@gmail.com

Address: Alpha Omicron Pi / Attn: Megan Hively | 1190 South Milledge Avenue | Athens, GA 30605



ΑΦ
Alpha Phi



Nickname:

APhi

Founded:

Syracuse University,
October 10, 1872

Chapter Name:

Kappa Epsilon

Symbol:

Ivy Leaf



Flower:

Lily of the Valley & Forget-me-not

Colors:

Silver and Bordeaux

Mascot:

Phi Bear

Philanthropy:

Alpha Phi Foundation

Alpha Phi is a sisterhood of outstanding women supporting one another in lifelong achievement. Our sisterhood was founded in 1872 at Syracuse University when ten of the first female students at the university decided to make history and create a fraternity for themselves. Sisters share a commitment to excellence and a strong desire to help one another and their communities. Alpha Phi enhances and promotes each member's academic and personal development by focusing on sisterhood, service, scholarship, leadership, loyalty and character.

The outstanding women of Alpha Phi at UGA contribute to both the University and Athens community through their involvement on and off campus. Our members are involved in UGA Miracle, UGA Relay for Life, UGA HEROs, Wesley Foundation, multiple sports teams, Dance Dawgz, Georgettes, Extra Special People (ESP), and many other organizations on campus and in the Athens community. Alpha Phi believes getting involved is the best way to give back and make a difference at UGA.

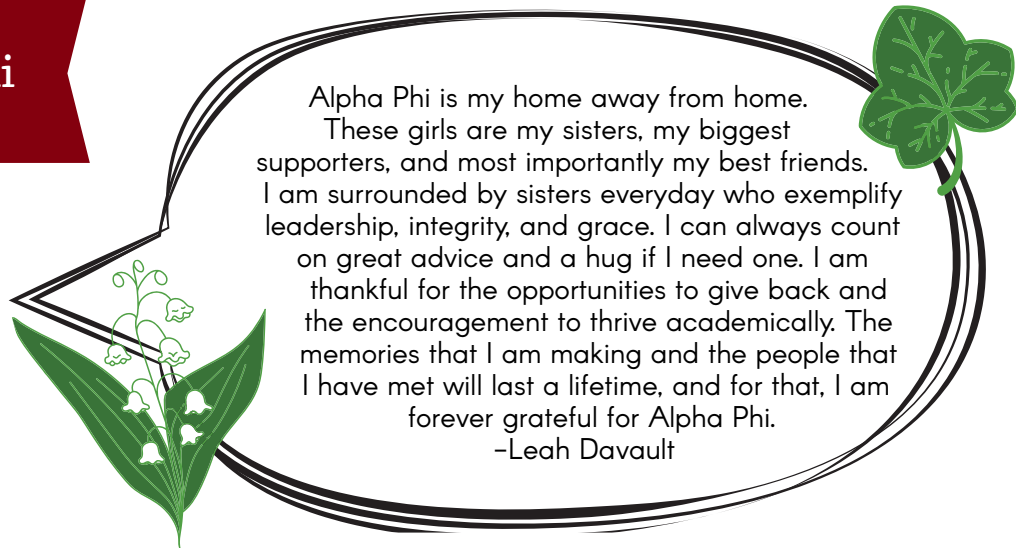
The women of Alpha Phi proudly support our international philanthropy, the Alpha Phi Foundation. This life-changing foundation raises money and awareness for women's heart health to help prevent heart disease, which is the number one leading cause of death in America. Last year alone, Alpha Phi collegiate and alumnae members from across the country raised \$2.45 million to support women's heart health. This year we hosted our first annual Red Dress Gala, which is our main philanthropy event that raises money towards the Alpha Phi Foundation. The 2020 Red Dress Gala raised over \$18,000 for the Alpha Phi Foundation. Our philanthropy is something we are incredibly passionate about, and we cannot wait to share our passion with you.

Alpha Phi welcomes you to the University of Georgia and hopes you have an amazing recruitment. We cannot wait to meet you!





**“So come on in, here’s
your cue, Be an Alpha Phi
girl, we want you!”**



Send letters of recommendation to: ugaaphirecs@gmail.com.

Address: Alpha Phi / Attn: Mikayla Strobel | 387 S. Milledge Ave. | Athens, GA 30606



XΩ
Chi Omega



Nickname:

Chi O

Founded:

University of Arkansas,
April 5, 1895

Chapter Name:

Mu Beta

Symbol:

Skull and Crossbones

Flower:

White Carnation

Colors:

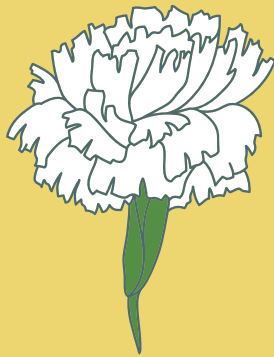
Cardinal and Straw

Mascot:

Owl

Philanthropy:

Make-A-Wish Foundation



The history of Chi Omega dates all the way backs to 1895 at the University of Arkansas. Currently, Chi Omega is the largest women's fraternal organization in the world, with a prodigious 181 collegiate chapters and over 320,000 initiated members. The outstanding chapter of Mu Beta was founded on April 21, 1922 and was the second sorority at the University of Georgia (talk about trendsetting).

Chi Omega has always held its members to a higher level of achievement through the implementation of six core values: friendship, high personnel standards, scholarship and honest learning, involvement with campus activities, and career development. Members of Chi Omega are prompted to expand their involvement by encouraging a broader understanding of aspects beyond those found in Chi Omega. Chi O's open declaration is "Hellenic Culture and Christian Ideal," and today members of Chi Omega recognize and draw from their rich historical background, which acts as the source of their prestige and strength.

Mu Beta members are active in many arenas across not only the University of Georgia campus, but also the Athens area in general. Current members serve on the executive boards of UGA CURE, UGA You're Not Alone, UGA HERO's and Food2Kids. Several members have also served as senators on the Student Government Association. One member plays for the UGA Women's Soccer Team while others volunteer at the local soccer academy to coach children's soccer ages 4-12. Chi Omegas take part in other activities including YoungLife and are college representatives for companies such as Amazon and Rent the Runway. Chi Omega hosts a fall philanthropy focusing on raising money and awareness for Make A Wish, as well as organizing a spring philanthropy event, directing its efforts towards benefitting a local philanthropy chosen by the chapter.

Chi Omega can look particularly small from the front, but don't let the facade fool you. The house, commonly referred to as the "mullet" by the Mu Beta members because of its pristine front side but gargantuan backside and courtyard area (think David Bowie), can house 69 girls, making it one of the largest sorority houses at UGA. The courtyard is adjacent to the living quarters and the chapter room, providing a relaxing place to study or chat, do some squats or even catch some rays!

Chi O is so ecstatic to welcome you to UGA and cannot wait to meet you during Recruitment!





“Chi Omega key I chi,
Chi Omega til I die!”



“At first I was not sure what Greek life would be like for me being out of state, but being in Chi O has been one of the most redeeming experiences for me because I was able to meet girls in and out of state who I can always count on to love and support me.”

–Helen Foster



Send letters of recommendation to: ugachiorecruitment@gmail.com
Address: Chi Omega | 324 South Milledge Avenue | Athens, GA 30605

**Nickname:**

Tri Delta, Tri-Delt

Founded:

Boston University,
Thanksgiving Eve, 1888

Chapter Name:

Alpha Rho

Symbol:

Stars and Crescent, Pine, Pearl

Flower:

Pansy

Colors:

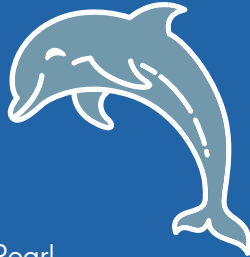
Silver, Gold and Cerulean Blue

Mascot:

Dolphin

Philanthropy:

St. Jude Children's Research Hospital



Delta Delta Delta was founded at Boston University in 1888. Tri Delta embodies the ideals of truth, self-sacrifice, and friendship. Tri Delta is an assembly of women woven together by their individuality of spirit, heart, and mind. Tri Delta is where you are empowered to be your true self. Together we are one of a kind, kind alike to all, and stronger together than we could ever be alone. We believe there is strength in our differences and we want to know: what makes you, you?

The Alpha Rho chapter of Tri Delta has been a member of the UGA Greek community for 84 years. Tri Delta's annual philanthropy event is a pancake supper, which raises money for our national philanthropy, St. Jude Children's Research Hospital. We are so proud to have exceeded our fundraising goal and raised \$12,000 dollars this year alone.

We stress the importance of both academics and extracurricular activities and involvement here at UGA. Members are involved in many aspects of campus life including, Dance Dawgs, Georgettes, Food 2 Kids, Humane Society, Shop with a Bulldog, Clarke County Mentors, Wesley, Cru, just to name a few. We are also so lucky to have members who serve on the executive board of UGA Miracle, UGA HEROs, and UGA Relay. On the other hand, our members also value academic achievement and have become members of the Leonard Leadership Scholars, Leonard Leadership Fellows, and the Honors Program.

The members of Delta Delta Delta welcome you to the University of Georgia and can't wait to meet you during recruitment.





“Tri-Delta and you will see why all the best girls go Delta-D-D!”



“I love Tri Delt because of all of the incredible support it has provided me. My sisters have seen me at my absolute best and worst, and they have never failed to have my back. Rather than feeling judged, they make me feel loved. If it weren't for Tri Delt I would have never found my home away from home.”
- Maggie Turano



Send letters of recommendation to: alpharhoreference@gmail.com

Address: Delta Delta Delta / Attn: Claire Gay | 1111 South Milledge Avenue | Athens, GA 30605



ΔΓ
Delta Gamma

Nickname:
DG

Founded:
Lewis School for Girls
December 25, 1873

Chapter Name:
Delta Iota

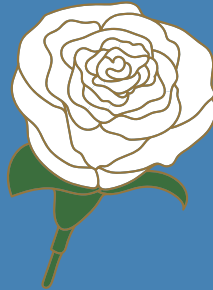
Symbol:
Golden Anchor

Flower:
Cream Colored Rose

Colors:
Bronze, Pink and Blue

Mascot:
Hannah (rag doll)

Philanthropy:
Service for Sight



On Christmas Eve in 1873, three young women in Oxford, Mississippi founded Delta Gamma with the goal of bringing together the highest standard of women to form strong bonds on sisterhood and to foster intellectual growth and service.

Our chapter, Delta Iota, joined UGA's Greek community in 1968 and continues to pride itself on a strong and genuine sisterhood and excellence in academics, leadership, service, and social endeavors. Our sisters strive for excellence not only within Delta Gamma, but also on campus and in the Athens community. DGs are proud to be actively involved in every possible way on campus as we are represented in Arch Society, the UGA Honors Program, Foundation Fellows, Student Government Association, Diamond Darlings, Order of Omega, Dawg Camp, Georgia Recruitment Team, ROSE Society, and many more. DGs can also be found in club sports including cheer, swimming, archery, cross country, and equestrian.

We live to serve by our motto, "Do Good." Our annual philanthropy event is a Low Country Boil dinner on our lawn that raises money for Delta Gamma's national philanthropy, Service for Sight, which works to improve the quality of life for those with vision impairments or blindness. Our spring philanthropy event supports Joining Forces, a partnership between Delta Gamma and military veterans who have suffered eye injuries in combat. We are proud to work with Prevent Blindness Georgia, and we have several sisters who train puppies for the Guide Dog Foundation. Beyond our chapter's philanthropy, our sisters are passionate about campus-wide philanthropies, such as UGA Miracle, Relay, and HEROs, and actively serve the local community through organizations like Designated Dawgs, Shop with a Bulldawg, and volunteering with the Athens Humane Society. This past year we had the highest number of service hours of all Delta Gamma chapters, and have been in the top ten of all chapters for several years!

The sisters of Delta Gamma can't wait to welcome you to UGA and share our sisterhood with you during recruitment!





“She’s an anchor lovin’
southern beauty”



“Since coming to UGA, Delta Gamma has become my home away from home. I have found the girls that I can call my sisters and best friends. Every day I find comfort in the fact that I am surrounded by those who believe in genuine sisterhood, and do what they can to serve the community. DG has allowed me to find my place on a massive campus, and has shown me what it means to Do Good!”

– Katie Sidwell



Send letters of recommendation to: deltaiotasponsorship@gmail.com

Address: Delta Gamma / Attn: Sydney Szvetcz | 5515 Copper Creek Pass | Cumming, GA. 30040



ΔΦΕ
Delta Phi Epsilon

Nickname:

DPhiE, Delta Phi

Founded:

New York University Law School
March 17, 1917

Chapter Name:

Psi

Symbol:

Pearl

Flower:

The Lovely Purple Iris

Colors:

Royal Purple and Pure Gold

Mascot:

Unicorn

Philanthropy:

ANAD (National Association of Anorexia Nervosa and Associated Disorders), Cystic Fibrosis Foundation, Delta Phi Epsilon Educational Foundation



Founded by five bold women at New York University Law School on March 17, 1917, Delta Phi Epsilon continues to strive to be a sorority dedicated to empowering women. The Psi chapter of Delta Phi Epsilon was chartered on December 6, 2016, and seeks to uphold our motto “Esse Quam Videri,” to be rather than to seem to be. Our sisters are genuine women committed to inspiring one another, chasing after our goals, and reaching our full potential in all that we do. Delta Phi promotes growth, leadership, and confidence within every woman so that they can become inspirations to others. A visit to Delta Phi Epsilon will reveal just how closely we hold our values of justice, sisterhood, and love to our hearts.

Sisters of DPhiE actively raise money for the Cystic Fibrosis Foundation and The National Association for Anorexia and Associated Disorders. Our philanthropies are near and dear to us and we display that passion through various events and fundraisers throughout the year, such as Donut Palooza– a donut eating contest held at our house! Additionally, in 2019 we were awarded the Passion Fundraising Award from the Georgia chapter of the Cystic Fibrosis Foundation! We have also adopted Extra Special People (ESP) as our local philanthropy.

The sisters of the Psi chapter balance their participation on campus with dedication to academics. While being heavily involved on campus, sisters have been named to the President’s List, the Dean’s List, and Order of Omega. Our deep involvement on campus, apart from our national philanthropies, is something we are very passionate about; our sisters are involved in UGA Miracle, UGA HEROs, UGA Dance Team, Relay for Life, Shop with a Bulldawg, Student Government Association, the UGA Visitor’s Center, UGA Dawg Camp, several campus ministries, and an abundance of many other teams and organizations!

The sisters of Delta Phi Epsilon welcome you to UGA and are excited to see you during recruitment! Visit dphieuga.org to learn more about us.





"I'm a Delta Phi til the day I die!"



"The girls of DPhiE encourage me to be confident in who I am, for who I am is enough. My sisters are the essence of beauty; each unique in their brilliantly different ways. My sisters are trailblazers, constantly paving the way for success and greatness, and spread kindness in every step that they take. Through DPhiE I have found the people that do not judge, they accept. The love that was shown to me the moment that I first stepped onto the lawn of Delta Phi Epsilon and every day since is the reason that I fell in love with this sorority. I am so thankful to have these girls by my side

- Katie Schumacher



Send letters of recommendation to: ugadphierc@gmail.com
Address: Delta Phi Epsilon | 398 S. Milledge Ave. | Athens, GA 30605



ΔΖ
Delta Zeta

Nickname:
DZ

Founded:
Miami University,
October 24, 1902

Chapter Name:
Zeta Pi

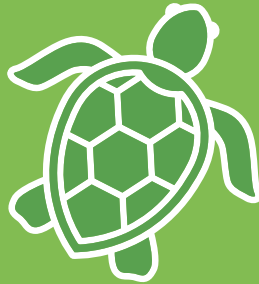
Symbol:
Roman Lamp

Flower:
Killarney Rose

Colors:
Old Rose and Green

Mascot:
Turtle

Philanthropy:
Starkey Hearing Foundation



Founded in 1902 at Miami University in Oxford, Ohio, Delta Zeta strives to enrich its members' lives through its tradition of leadership, service, and philanthropy. At the University of Georgia, the Zeta Pi Chapter continually exemplifies these expectations, earning the national sorority's highest achievement, the Crest Award, for the past five bienniums.

Delta Zeta prides itself on its devotion to its philanthropy, the speech and hearing impaired. Each year, our chapter hosts two all you can eat philanthropy events, Wing Bash and Bite of Athens, to financially support its local and national philanthropies. Collectively, Delta Zeta is extremely close to reaching its \$5 million in 5 years pledge to support The Starkey Hearing Foundation. Throughout the year, we participate in monthly hands-on service with the Deaf and Hard of Hearing program at Cleveland Road Elementary School. Our chapter also sponsors several of our members to serve as camp counselors each summer at the Painted Turtle Camp in Santa Monica, CA, a camp for children with chronic illnesses. As a chapter, Zeta Pi has documented over 18,000 service hours over the past year, providing assistance to countless members of the local Athens community and the global community.

Our belief in service also extends to on-campus organizations where 100% of our members are making an impact in at least two or more organizations here at UGA. Several of our members serve in leadership positions and executive boards for a wide variety of organizations including UGA Miracle, UGA HEROs, UGA Visitors Center, Food2Kids, Diamond Darlings, Extra Special People, Chip's Nation, Whatever It Takes Tutoring, the Wesley Foundation, and many other organizations on campus and in the Athens community.

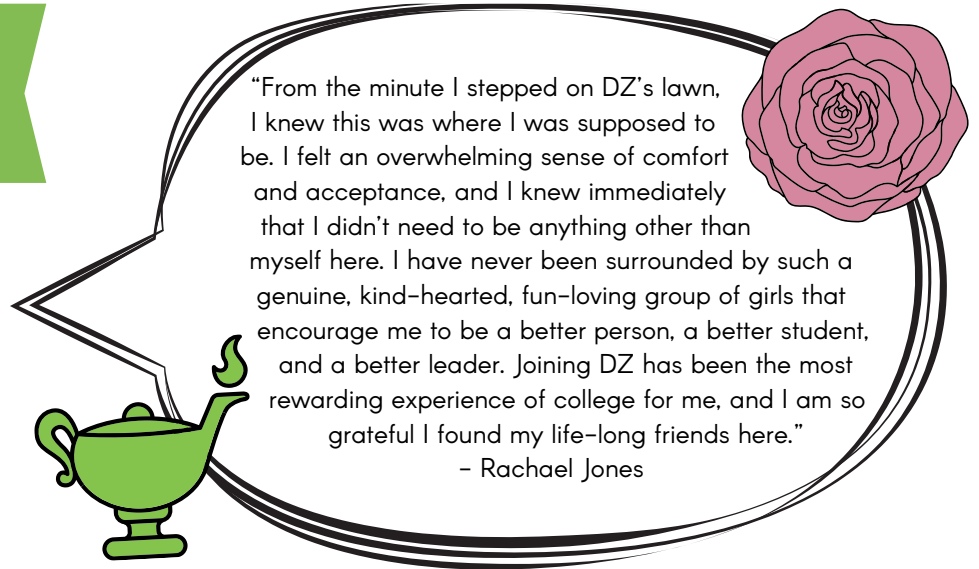
At Delta Zeta, we motivate our women to be well-rounded individuals. In addition to our dedication to service and involvement, we encourage our members to excel in the classroom. We pride ourselves on having achieved the second highest Panhellenic GPA for the past two years. We currently have members in all facets of academia including the Honors Program, Research Labs, Terry Ambassadors, and Double Dawgs Programs.

Our girls are inspiring, ambitious, sincere, and so much more. Each of our members displays what it means to be a Delta Zeta in their own unique way and we are thrilled to have the opportunity to show them off. We can't wait to meet you in August! Have fun during recruitment and good luck with the rest of your time here at the University of Georgia. GO DAWGS!





“Live in the flame.”



“From the minute I stepped on DZ’s lawn, I knew this was where I was supposed to be. I felt an overwhelming sense of comfort and acceptance, and I knew immediately that I didn’t need to be anything other than myself here. I have never been surrounded by such a genuine, kind-hearted, fun-loving group of girls that encourage me to be a better person, a better student, and a better leader. Joining DZ has been the most rewarding experience of college for me, and I am so grateful I found my life-long friends here.”

– Rachael Jones



Submit letters of recommendation online at: dz.deltazeta.org/Recruitment
Questions: dzzetapreference@gmail.com



ΓΦΒ
Gamma Phi Beta



Nickname:

Gamma Phi

Founded:

Syracuse University,
November 11, 1874

Chapter Name:

Delta Upsilon

Symbol:

Crescent Moon

Flower:

Pink Carnation

Colors:

Pink and White

Mascot:

White Harp Seal

Philanthropy:

Building Strong Girls



Gamma Phi Beta was founded in 1874 at Syracuse University upon four core values: the love we have for each other, the labor we do for our community, the learning we encourage, and the loyalty we share. The Delta Upsilon Chapter of Gamma Phi Beta is a sisterhood comprised of talented, unique, and ambitious women. Each member strives to inspire the highest type of womanhood through community service, academic achievement, and commitment to sisterhood.

Members of Gamma Phi Beta are actively involved across campus and are leaders in organizations including Orientation Leaders, the Georgia Recruitment Team, Freshman Greek Leaders, UGA Miracle, HEROs, Relay for Life, Pi Sigma Epsilon, DiGamma Kappa, Public Relations Student Society of America, Wesley, Young Life, and many more. Our members also value academic achievement and have been honored with membership in groups including the Honors Program, Omicron Delta Kappa, Tate Society, Blue Key, Grady Ambassadors, Order of the Omega, and Institute for Leadership Advancement.

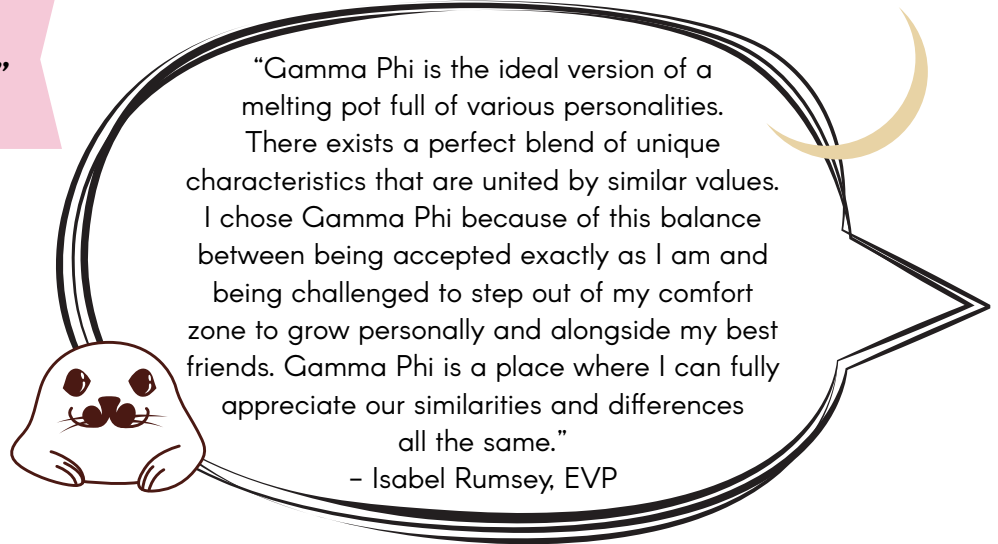
We believe in empowering our members to go above and beyond in order to achieve their dreams. This mission extends to our philanthropy, Building Strong Girls, through Girls on the Run. Girls on the Run is an afterschool program dedicated to building confident elementary and middle school aged girls by proactively providing opportunities for long-term success and inspiring the leaders of tomorrow. Our members serve as coaches, training their elementary and middle school teams for a 5k at the end of the season, while encouraging body positivity, discussing everyday challenges and promoting girl power. We host two annual events, Grilled Cheese with the GPhiB's and Moonball, a campus wide volleyball tournament, to raise money for our local chapters of Girls on the Run. Each member of our organization has a direct impact on participants right here in Athens.

The women of Gamma Phi Beta welcome you to the University of Georgia and wish you the best of luck with recruitment!





“We’re sisters ever true,
friendships for me and for you.”



Submit letters of recommendation at: gammaphibeta.org
 Address: Gamma Phi Beta / Attn: Brianna Johnson | 397 S. Milledge Ave. | Athens, GA 30605
 Questions: E-mail Allison Schmitt at mvpugagpb@gmail.com



KΑΘ
Kappa Alpha Theta

Nickname:
Theta

Founded:
DePauw University,
January 27, 1870

Chapter Name:
Gamma Delta

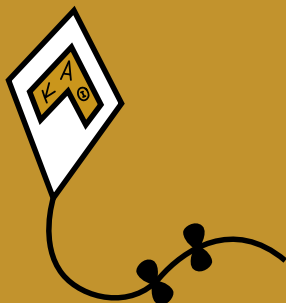
Symbol:
Kite

Flower:
Pansy

Colors:
Black and Gold

Mascot:
Cat

Philanthropy:
Court Appointed Special Advocates
(CASA) for Children



Kappa Alpha Theta was founded in 1870 as the first Greek-letter fraternity for women. The Gamma Delta chapter at the University of Georgia, chartered in 1936, is one of more than 130 chapters at colleges and universities across the United States and Canada.

Our members are intellectually ambitious, exemplify the widest influence for good, and promote the relevance of the Theta experience in order to lead themselves and each other to personal excellence. Thetas live up to their outstanding reputation by showing support for one another, the University, and the Greek community as a whole. Thetas strive for excellence in all areas of campus life including academics, social endeavors and sisterhood.

As a group, Kappa Alpha Theta contributes a great deal of time and energy to the University community. Our members are engaged in many aspects of campus life, and currently serve on the executive boards of UGA Miracle, Relay for Life, and Order of Omega. Thetas are also involved in a variety of organizations, such as Shop with a Bulldawg, Student Government Association, intramural and club sports, UGA Cheerleading, UGA HEROS, The Arch Society, Habitat for Humanity, Young Life and UGA Student Pantry. Our members also come together throughout the school year to host events that support our philanthropy, Court Appointed Special Advocates (CASA).

The members of Kappa Alpha Theta are so excited to meet you and welcome you to the University of Georgia!





“Theta made a lady out of me..”



“My favorite thing about Theta is the fact that it makes such a big campus seem smaller! I have made lifelong friends in just a matter of months and have never felt more at home.”

–Taylor Willis



Send letters of recommendation to: kaorecruitment@gmail.com

Address: Kappa Alpha Theta / Attn: Lorna Ramage | 338 S. Milledge Ave. | Athens, GA 30605



KΔ
Kappa Delta



Nickname:
KD

Founded:
Longwood College,
October 23, 1897

Chapter Name:
Sigma Phi

Symbol:
Nautilus Shell

Flower:
White Rose

Colors:
Olive Green and Pearl White

Mascot:
Teddy Bear

Philanthropy:
Prevent Child Abuse America,
Girl Scouts of America



"Let us strive for that which is honorable, beautiful, and highest." Kappa Delta was founded in Farmville, Virginia in 1897, and the Sigma Phi Chapter was installed at UGA on March 22, 1924. Nationally, the objective of the sorority is the foundation and perpetuation of good fellowship, friendship, and sisterly love among its members, the encouragement of literature and education, the promotion of social interest, and the furtherance of charitable and benevolent purposes.

Kappa Deltas find pride in their sisterhood through a combination of leadership, involvement, and love for each other. KD encourages scholarship, community service, and campus involvement. Members of Kappa Delta hold positions in numerous organizations such as Orientation Leaders, UGA Heroes, UGA Miracle, Relay for Life, Order of Omega, Student Government Association, Grady NewsSource, Georgia Gameday, and many other noteworthy organizations. Nationwide each chapter is granted their choice of local philanthropic Shamrock Events. Last year KD hosted a benefit concert featuring country artist Jon Langston and an All-You-Can-Eat Waffle House dinner at the Kappa Delta House. All proceeds from these events benefit Prevent Child Abuse Athens. Kappa Delta also works closely with the local Girl Scouts of America troupes to help instill confidence in these young women.

The Kappa Delta house is the only sorority house at UGA that is structured as one main house and 19 furnished apartments. The apartments enclose a beautiful courtyard where our sisters enjoy spending time together. Kappa Delta welcomes you to UGA and wishes you the best of luck during Recruitment!







“We are the Kappa Deltas,
we are the ones for you...
don’t you want to be a KD too?”



“Coming from out-of-state, I knew no one. College can be a scary experience for everyone, and I thought it was going to be that way for me. I knew KD was the place for me the first day of recruitment. There was a feeling of comfort and ease when I talked to the girls and could visibly tell the closeness. For me, the best part about college is the small connections you make with the people around you. Being apart of KD has surrounded me with the brightest, kindest and sweetest girls that inspire me to be a better person everyday. You never really know how much someone can mean to you, but I knew from the first minutes of Bid Day. I’m so thankful for my experience in KD, and am honored to have the privilege of representing an involved, connected group of girls.”

– Amanda Depinto





KKΓ
Kappa Kappa Gamma

Nickname:

Kappa

Founded:

Monmouth College
October 13, 1870

Chapter Name:

Delta Upsilon

Symbol:

Key

Flower:

Fleur-de-lis

Colors:

Light Blue and Dark Blue

Mascot:

Owl

Philanthropy:

Reading is Fundamental, St. Jude's Children's
Research Hospital



Our chapter was founded in 1948 and thrives on tradition, leadership, academics, and friendship. Represented by the golden key and fleur de lis, Kappa women find their home in Athens, but their roots span across the country and the globe. From Texas to New York – and all the way to Switzerland – our members exemplify uniqueness! The members of Delta Upsilon are very active on the UGA campus. We are executives among organizations such as UGA HEROS, UGA Miracle, SGA, etc.

We have members in design and fashion clubs, honors organizations, sports clubs, and more. Our chapter members cover the University of Georgia campus, proving their commitment not only to Kappa, but also their institution. Kappa supports our chapter philanthropy, local non-profit Books For Keeps, through our two annual philanthropy events, Crawfish Boil and Kasino Night. We are proud to say that in previous years we have collectively raised over \$100,000 for such an amazing cause. Kappa welcomes you to sorority recruitment at the University of Georgia and can't wait to meet you!





“I’m a Kappa Gamma,
awful glad I am a..
rootin’ tootin’ K-K-G!”



“What Kappa means to me is always having a place to call home. Through the highs and lows of college, these girls are always there to make me feel like I am surrounded by family. No matter where you’re from or what grade you’re in, everyone has so much love and compassion for each other, making it easy to call Kappa my home away from home!”



-Grace Ann Nader



Send letters of recommendation to: lilywaggonerkg@gmail.com

Address: Kappa Kappa Gamma / Attn: Lily Waggoner | 440 S. Milledge Avenue | Athens, GA 30605



ΦΜ
Phi Mu

Nickname:

Phi Mu

Founded:

Wesleyan College,
March 4, 1852

Chapter Name:

Alpha Alpha

Symbol:

Lion

Flower:

Rose Carnation

Colors:

Rose and White

Mascot:

Ladybug

Philanthropy:

Children's Miracle Network Hospitals



Phi Mu was originally founded as the Philomathean Society at Wesleyan College in Macon, GA on March 4, 1852. For several years around the turn of the century, there were discussions about becoming a national organization, and in 1900 the organization adopted the Greek name "Phi Mu" symbolizing the Society's secret motto. In 1903 the national chapter was received by the state of Georgia, and the original membership became the first chapter of Phi Mu. The open motto for Phi Mu is "Les Soeurs Fideles" meaning "The Faithful Sisters." The Alpha Alpha chapter of Phi Mu at the University of Georgia was founded as the first sorority at UGA on April 28, 1921.

Members of Phi Mu distinguish themselves through their commitment to leadership, philanthropy, community involvement, and loyalty to one another. Phi Mu's National philanthropy is Children's Miracle Network Hospitals, translated as UGA Miracle on campus. To benefit this organization, Phi Mu hosts a "Meal on the Lawn" in both the fall and spring. Phi Mu participates in UGA Miracle's 24-hour Dance Marathon, serving as Executive Board Members, Committee Leads, Committee Members, and Team Members. During the 2019-2020 school year, Phi Mu alone raised \$206,483 for this cause! When you visit Phi Mu, you will experience the passion, enthusiasm and support Phi Mu's continuously offer each other and their surrounding community.

The members of Phi Mu welcome you to Sorority Recruitment at the University of Georgia and cannot wait to meet you soon!



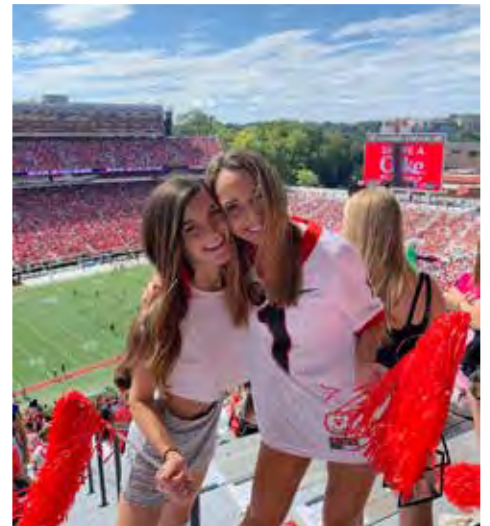
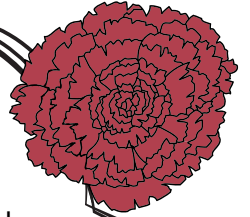


“La de da, those Phi Mus are the best!”



“I think the most unique things about Phi Mu are the diversity of interests, amount of acceptance, encouragement to be involved, and being able to be passionate about what you care about with full support from everyone in the chapter.”

– Maggie Fitzgerald



Send letters of recommendation to: phimuugarecletters@gmail.com
Address: Phi Mu / Attn: Margot Leggat | 250 S. Milledge Ave | Athens, GA 30605



ΠΒΦ
Pi Beta Phi

Nickname:

Pi Phi

Founded:

Monmouth College
April 28, 1867

Chapter Name:

Georgia Alpha

Symbol:

Arrow

Flower:

Wine Carnation

Colors:

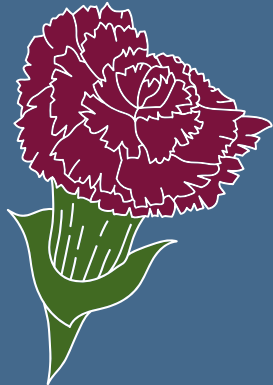
Wine and Silver Blue

Mascot:

Angel

Philanthropy:

Read>Lead>Achieve



The first organization of college women established as a national college fraternity, Pi Beta Phi, was founded in 1867 at Monmouth College. UGA's Georgia Alpha chapter was established in 1939 and is one of 200 chapters.

Pi Phi's symbol, the arrow, is always pointed upward and worn over the heart to represent Pi Phi's permanent place in a member's heart. Pi Beta Phi hosts their annual Pi Phiesta dinner and Classic City Skate Night philanthropy events to raise money for the Pi Beta Phi Foundation. The Pi Beta Phi Foundation promotes literacy through Read>Lead>Achieve initiatives and provides scholarships to those in need. Pi Phi is also a partner in education with Alps Road Elementary School in Athens where members tutor students regularly and help make a positive difference in the community.

Members of Pi Beta Phi are in over 150 organizations on campus including UGA Miracle, UGA Relay, UGA HEROs, Order of Omega Honors Society, UGA Judiciary, Greek Life Ambassadors, Clarke County Mentorship Program, Diamond Darlings, Shop with a Bulldawg, Extra Special People, Dean William Tate Honor Society, and Student Government Association. The mission of Pi Beta Phi is to promote friendship, develop women of intellect and integrity, cultivate leadership potential, and enrich lives through community service. There is an unmatched level of integrity, commitment to excellence, and a general aura of potential that sets a Pi Phi apart from the rest.

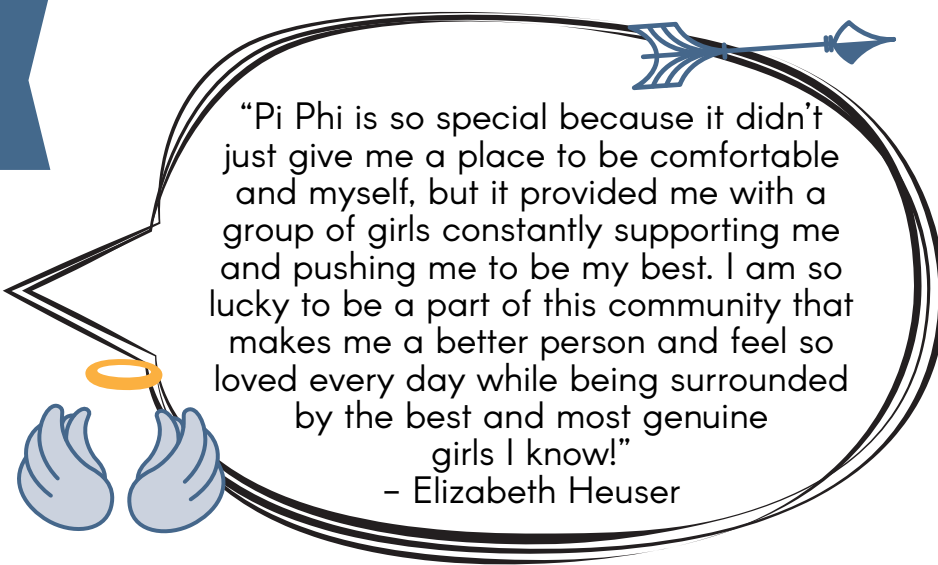
The quote, "Individually unique, together complete," perfectly describes Pi Beta Phi because the members of our chapter are not expected to fit a cookie cutter mold. Instead, our chapter encourages individuality so that we can learn and grow from each other.

Pi Beta Phi hopes you have a fantastic experience at UGA and looks forward to meeting you!





“Since I was a girl
knee high, I wanna go
Pi Beta Phi”



Send letters of recommendation to: gaavpr@gmail.com
Address: Pi Beta Phi / Attn: Skylar Barth | 886 S. Milledge Ave. | Athens GA, 30605



ΣΔΤ
Sigma Delta Tau

Nickname:

Sig Delt

Founded:

Cornell University
March 25, 1917

Chapter Name:

Eta

Symbol:

Torch

Flower:

Yellow Tea Rose

Colors:

Cafe Au Lait and Old Blue

Mascot:

Teddy Bear

Philanthropy:

Prevent Child Abuse America



Sigma Delta Tau was founded on March 25th, 1917 at Cornell University and has grown to include more than 90 college campuses across the United States and Canada. The Eta chapter was chartered at the University of Georgia on April 6, 1924. The mission of Sigma Delta Tau is to enrich the college experience of women of similar ideals, to build lasting friendships, and to foster personal growth.

Sig Deltas are involved and hold leadership positions in many activities, organizations, and clubs around campus. Each year, the Eta chapter looks forward to its signature event, SDT Greek Grind, the largest Greek philanthropy on campus. This highly anticipated event is a dance competition among all Panhellenic sororities on campus that raises money for Prevent Child Abuse America. As the success of this event continues to grow, the Eta chapter takes SDT Greek Grind to a new level every year by expanding to a larger audience and raising more money. Last fall, Sigma Delta Tau raised \$91,000 for PCAA – record breaking numbers for SDT nationally in our philanthropic efforts. Our Spring Philanthropy is now called ΣΔΤ Your Heart Out. Our proceeds will be going towards various organizations around Athens in hopes to give back to the community that gives us so much. Additionally, this year we raised \$93,000 dollars in SDT Greek Grind.

The Eta chapter shares a close sisterhood and takes pride in its academic, social, and Panhellenic endeavors.

Sigma Delta Tau welcomes you to the University of Georgia and wishes you the best of luck with recruitment! We cannot wait to meet you soon!



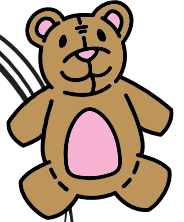


“#whySDT”



“Sigma Delta Tau has become more than just a sorority for me. It has become my family. With girls that always make me feel wanted, I know that I can be my goofy self without judgement. SDT has introduced me to the most passionate and loving people I will ever meet, and they have made this large campus feel like home.”

–Isabel Shemaria



Send letters of recommendation to: ugasdtrecommendations@gmail.com
 Address: Sigma Delta Tau / Tobi Alper | 525 Bloomfield Street | Athens, GA 30605



ΣΚ
Sigma Kappa

Nickname:
SK

Founded:
Colby College
November 9, 1874

Chapter Name:
Epsilon Epsilon

Symbol:
Dove

Flower:
Violet

Colors:
Lavender and Maroon

Mascot:
Pearl

Philanthropy:
The Sigma Kappa Foundation:
The Alzheimer's Association
Inherit the Earth



Sigma Kappa Sorority was founded in 1874, when the first five females were admitted to the previously all male Colby College in New England. They came together to create an organization dedicated to providing women with lifelong opportunities for social, intellectual, and spiritual development. Today, Sigma Kappa continues to grow, with more than 122 collegiate chapters, and 172,000 initiated members across the United States.

The Epsilon Epsilon chapter of Sigma Kappa at the University of Georgia celebrates the initiative to "Live with Heart" as we provide our members with opportunities to positively impact the UGA community while making memories that last a lifetime. Our chapter shares in national initiatives such as sisterhood retreats, parent weekends and events to support our five national philanthropies, including Inherit the Earth and the Walk to End Alzheimer's. As a chapter, we raised \$37,000 for the Alzheimer's Association in 2019. We also have many local traditions unique to our chapter, including our Gator Hunt date night, Mystic Pizza, and Senior Wills that we treasure during our time at 654 South Milledge. Our house was built in 1923 by the then-mayor of Athens, and became known as "The Mayor's House." Sigma Kappa has been proud to own and maintain it for more than 55 years. Hundreds of sisters have lived here and we always welcome them back to share their memories, laughter, and sisterhood.

Sigma Kappas are involved in a variety of philanthropic and academic organizations, such as UGA Miracle, Relay for Life, Order of Omega, and Women in Technology. Additionally, we continue to maintain a high ranking GPA among Greek Life.

Sigma Kappa welcomes you to the University of Georgia and wishes you the best of luck with recruitment!





“Sigma Kappa you will see, is the place you want to be!”



“I love Sigma Kappa because it has made my move from California to UGA so much better! Coming from across the country was a scary experience, but after I joined SK I instantly met my family away from home. I was embraced by a group of gorgeous, smart, and hilarious girls who have made me feel the love and compassion that surrounds this sorority. I know the friendships I have made here will last a lifetime!”
-Maggie Weller



Send letters of recommendation to: ugasigmakappavpm@gmail.com
Address: Sigma Kappa / Attn: Brinkley Marsh | 2561 Flemington Rd. | Atlanta, GA 30345



ZTA
Zeta Tau Alpha

Nickname:

Zeta

Founded:

Longwood College,
October 15, 1898

Chapter Name:

Gamma Pi

Symbol:

Crown

Flower:

White Violet

Colors:

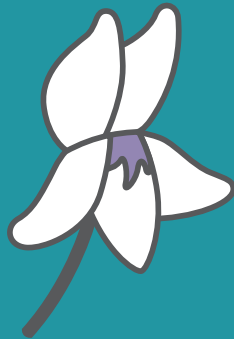
Steel Grey and Turquoise Blue

Mascot:

Strawberry

Philanthropy:

Breast Cancer Awareness & Education



Zeta Tau Alpha was founded at the University of Georgia in 1949 on the precept of devotion to the right, the good and the true that once brought together the original nine founders. Today, Zeta Tau Alpha's across the country continually strive to reflect their open motto, "Seek the Noblest" in every aspect of their lives. The Gamma Pi chapter is committed to excellence and continually receives awards of the highest distinction at a local and national level. Our Gamma Pi chapter at UGA was awarded the Helen Margaret Harrison Award, which is given to the #1 collegiate chapter in the nation, at the past three ZTA National Conventions.

ZTA prides itself on exemplary leadership, dedicated involvement and service. Members of Zeta Tau Alpha are actively involved across campus including the Arch Society, Order of Omega, UGA Athletics, Georgettes, Dance Dawgs, Majorettes, Miss UGA pageant, Student Judiciary, Dance Marathon, Student Alumni Council, and Orientation Leaders. 100% of our members are involved in at least two activities on campus, with over 50% of our members holding prestigious leadership roles in those activities.

Academic achievement is also a high priority in ZTA. Members have been selected for the UGA Honors Program, Foundation Fellows and Leonard Leadership Scholarships. It is with great pride that the Gamma Pi chapter consistently maintains an excellent chapter grade point average. Our older members are eager to use their experiences to serve as mentors for the younger members relating to academic decisions. In addition, Gamma Pi has an extensive network of alumnae who provide mentorship and networking for internships and professional support.

Think Pink is the registered trademark of ZTA's national philanthropy of Breast Cancer Education and Awareness. ZTA has national partnerships with the American Cancer Society, Bright Pink, and the National Football League. The Gamma Pi chapter has raised more than \$1,000,000 since the inception of their annual Diamond Challenge Softball Tournament hosted by the chapter each spring. The chapter is consistently recognized for their philanthropic efforts and ranked as one of the highest fundraising chapters in the country.

Zeta Tau Alpha welcomes you to the University of Georgia and wishes you the best of luck with Recruitment! GO DAWGS!

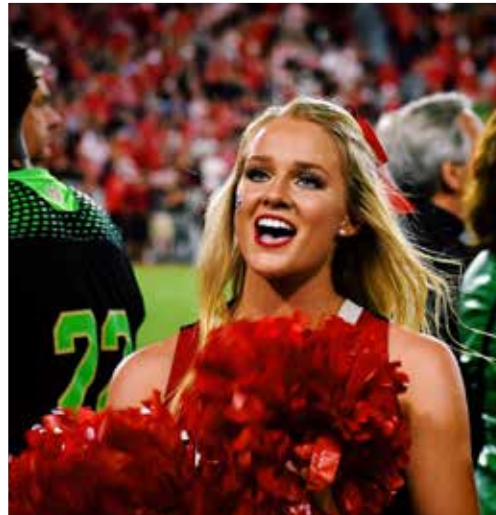
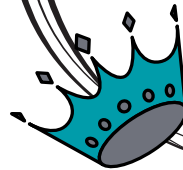
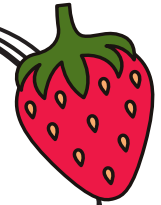




"Boom boom, I'm glad I'm a Z-T-A, Boom boom, wouldn't have it any other way!"



"I am so thankful for Zeta Tau Alpha and the relationships it has brought me throughout college. The opportunities and leadership positions I pursued pushed me to be the best version of myself. I can easily say I would not be where I am today without Zeta!"
- Ashlyn Lanier



Send letters of recommendation to: uga.zta.recs@gmail.com

Address: Zeta Tau Alpha | Attn: Jess Sallah | 1170 Founders Lake Dr, Athens GA, 30606



Bid Day, & Custom
GIFT PACKAGES!



We have been serving the Greek community in Athens since 1975
Specializing in Customization, Sorority Apparel & Gifts and UGA Apparel & Gifts!

We offer many choices of
BID DAY & UGA Gift Baskets
plus various Care Packages.



The only Greek Licensed Store in Athens who caters to the
Greek and UGA community throughout the year.

Let us help make the transition into college
a special and unforgettable one!

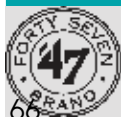
CALL OR ORDER ONLINE TODAY!

Top of Baxter Hill • 700 Baxter Street • Athens, GA 30605

706.353.2677 • universitiespirit.com



universitiespirit.athens@gmail.com





Jamie Calkin

Athens Ink and Watercolor Artist



/jamiecalkinart



jamie@jamiecalkin.com



@jamiecalkinart

House prints available online



Inquire about Jamie capturing your next event at

JamieCalkin.com

A note of thanks

Panhellenic extends a special *thank you* to Jamie Calkin for allowing us to use the artwork you see on the front cover and of each sorority house.

Thanks,
JAMIE!

HOTWORX®

24 HOUR INFRARED FITNESS STUDIO

**TONE, DETOX, AND BURN MASSIVE CALORIES IN
LESS THAN 30 MINUTES - YOUR FIRST WORKOUT IS FREE**

KEEP THE FRESHMAN 15 FROM HAPPENING TO YOU!



HOT ISO	HOT BARRE	HOT BANDS
HOT YOGA	HOT WARRIOR	HOT CYCLE
HOT PILATES	HOT CORE	HOT BLAST

WORK OUT ANYTIME - DAY OR NIGHT
SECURE FACILITY - WELL LIT WITH SECURITY CAMERAS
WALK FROM CAMPUS OR PARK IN OUR PRIVATE LOT



BRING IN
THIS AD
FOR 50% OFF
FIRST MONTH
DUES

ACROSS FROM BRUMBY HALL

496 BAXTER ST., ATHENS
HOTWORX.NET/STUDIO/ATHENS

(706) 309-0249



1 ΑΔΠ | 150 S. Milledge Ave.

2 ΦΜ | 250 S. Milledge Ave.

3 ΔΓ | 290 S. Milledge Ave.

4 ΔΖ | 317 S. Milledge Ave.

5 ΑΦ | 387 S. Milledge Ave.

6 ΓΦΒ | 397 S. Milledge Ave.

7 ΧΩ | 324 S. Milledge Ave.

8 ΚΑΘ | 338 S. Milledge Ave.

9 ΔΦΕ | 398 S. Milledge Ave.

10 ΚΚΓ | 440 S. Milledge Ave.

11 ΑΓΔ | 530 S. Milledge Ave.

12 ΣΚ | 654 S. Milledge Ave.

13 ΚΔ | 750 S. Milledge Ave.

14 ΠΒΦ | 886 S. Milledge Ave.

15 ΖΤΑ | 897 S. Milledge Ave.

16 ΔΔΔ | 1111 S. Milledge Ave.

17 ΑΟΠ | 1190 S. Milledge Ave.

18 ΣΔΤ | 525 Bloomfield St.

19 ΑΧΩ | 1064 S. Lumpkin St.